

ONE
BISHOPSGATE
PLAZA





Contents

Site Plan

6

Residents' Amenities

9

The Sky Residences

19

One-Bedroom Apartments

23

Two-Bedroom Apartments

33

Three-Bedroom Apartments

55

Information

72

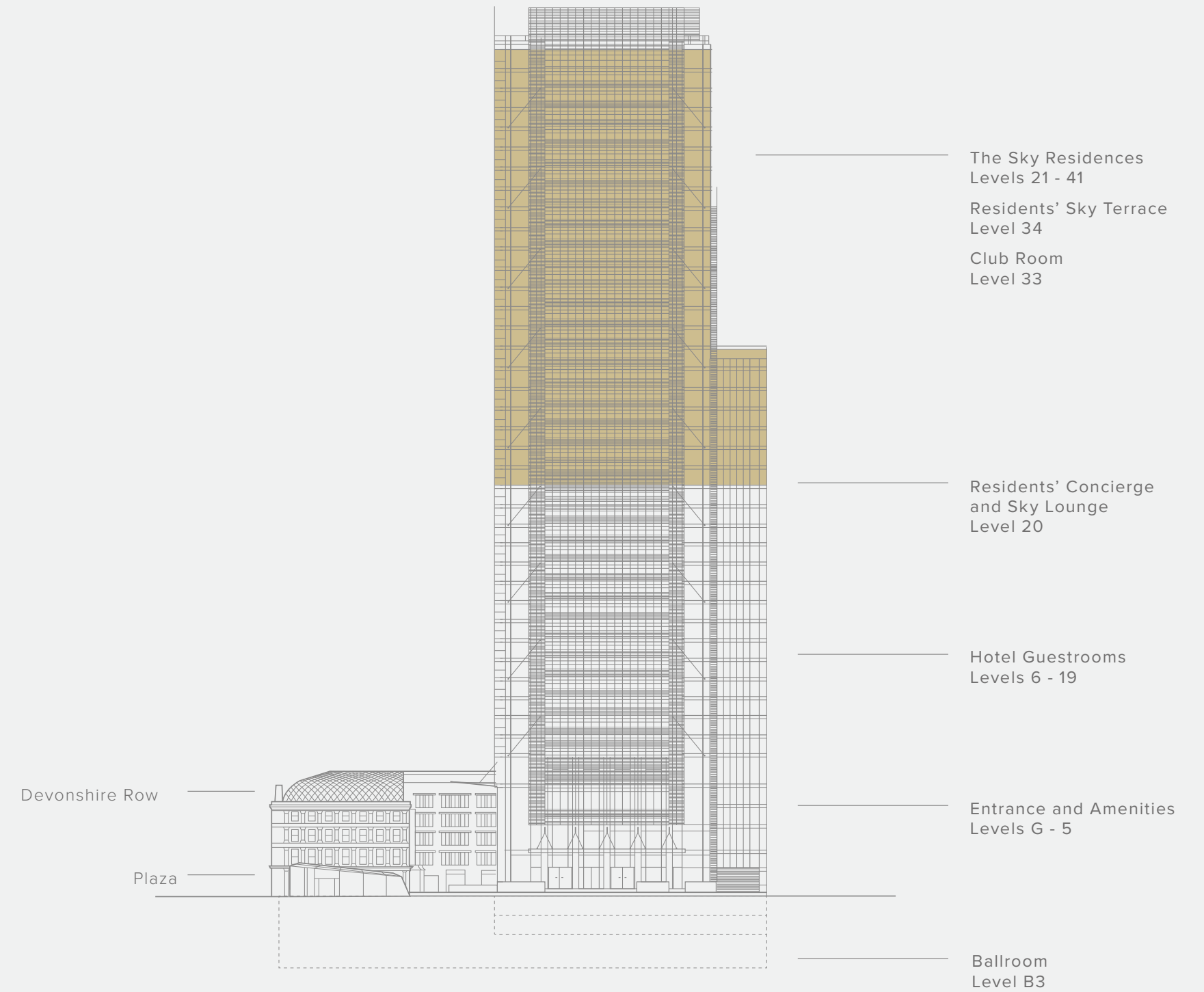


Bishopsgate Plaza

SITE PLAN



THE BUILDING
SOUTH ELEVATION





Swimming pool on the fourth level

RESIDENTS' AMENITIES

Private Luxury Living Above the City with Hotel Amenities at Your Feet

Step inside One Bishopsgate Plaza and be greeted by an unparalleled world of luxury amenities and services.

Residents have access to a range of superior amenities throughout the hotel. These include a ballroom, a lounge and bar on ground level, restaurant with private dining, swimming pool overlooking Bishopsgate Plaza, a gymnasium, wellness and spa treatment area and a vast and flexible business centre. All have been designed to exacting standards by globally renowned practice Yabu Pushelberg.

In addition, amenities are arranged on the upper levels above the hotel for the exclusive use of private residents and their guests. The residents' lobby located on Level 20 provides a welcoming gateway to the residences above and is where the concierge and sky lounge are located complete with library, meeting rooms and bar. The club room on Level 33 and sky terrace on Level 34 provide areas perfect for a peaceful retreat.

AMENITIES



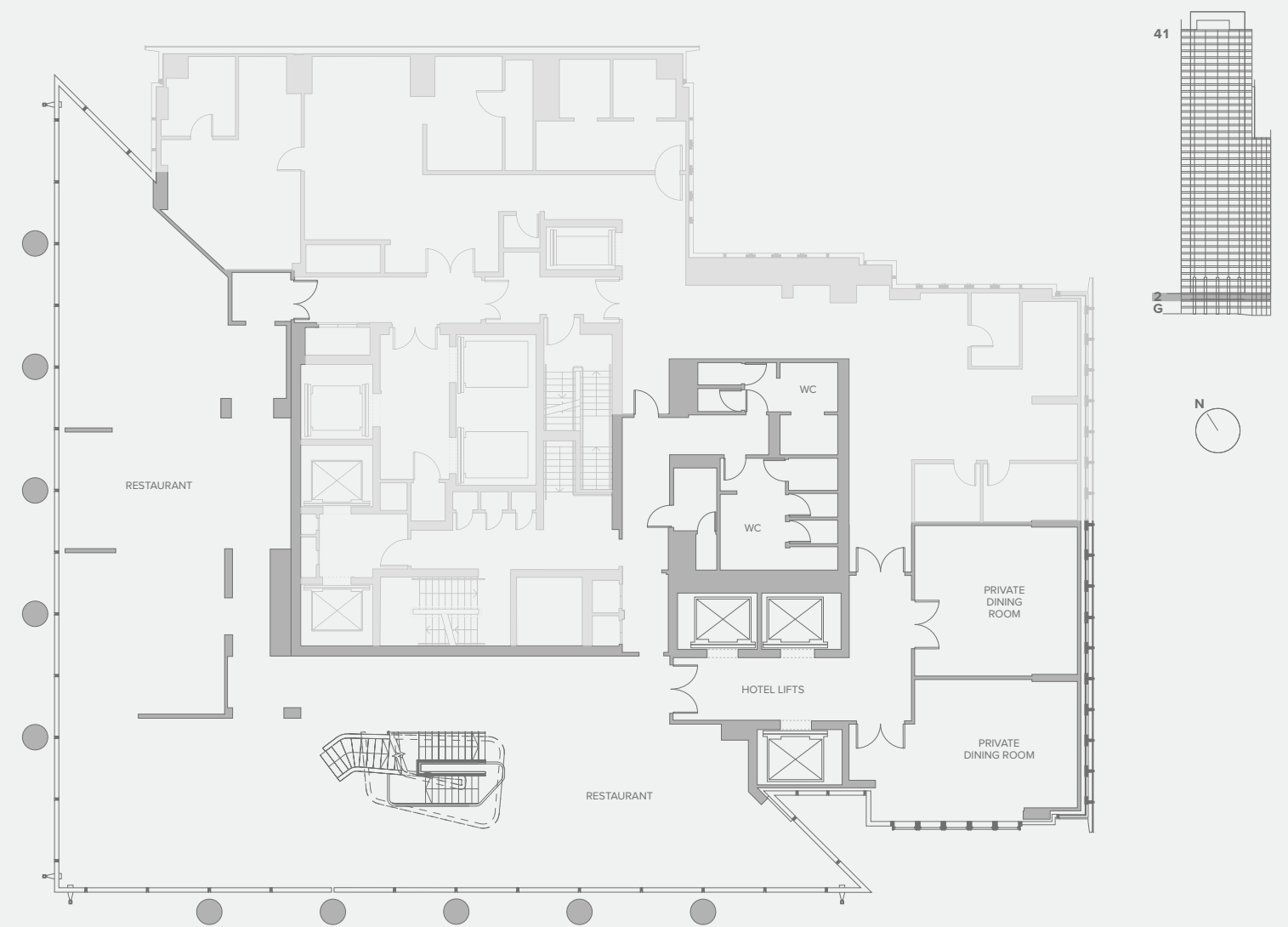
GROUND LEVEL

- HOTEL RECEPTION
- HOTEL BAR AND LOUNGE
- PRIVATE RESIDENTS' LIFT LOBBY

● Exclusive residents' amenities

All plans and images contained in this brochure are indicative only and must not be relied upon as being a true or accurate depiction of the relevant scene or area. Specifications, including measurements, dimensions, sizes and distances are approximate only and subject to change at any time without notice. Please note that the units come in different sizes and configurations depending on location within the building.

AMENITIES

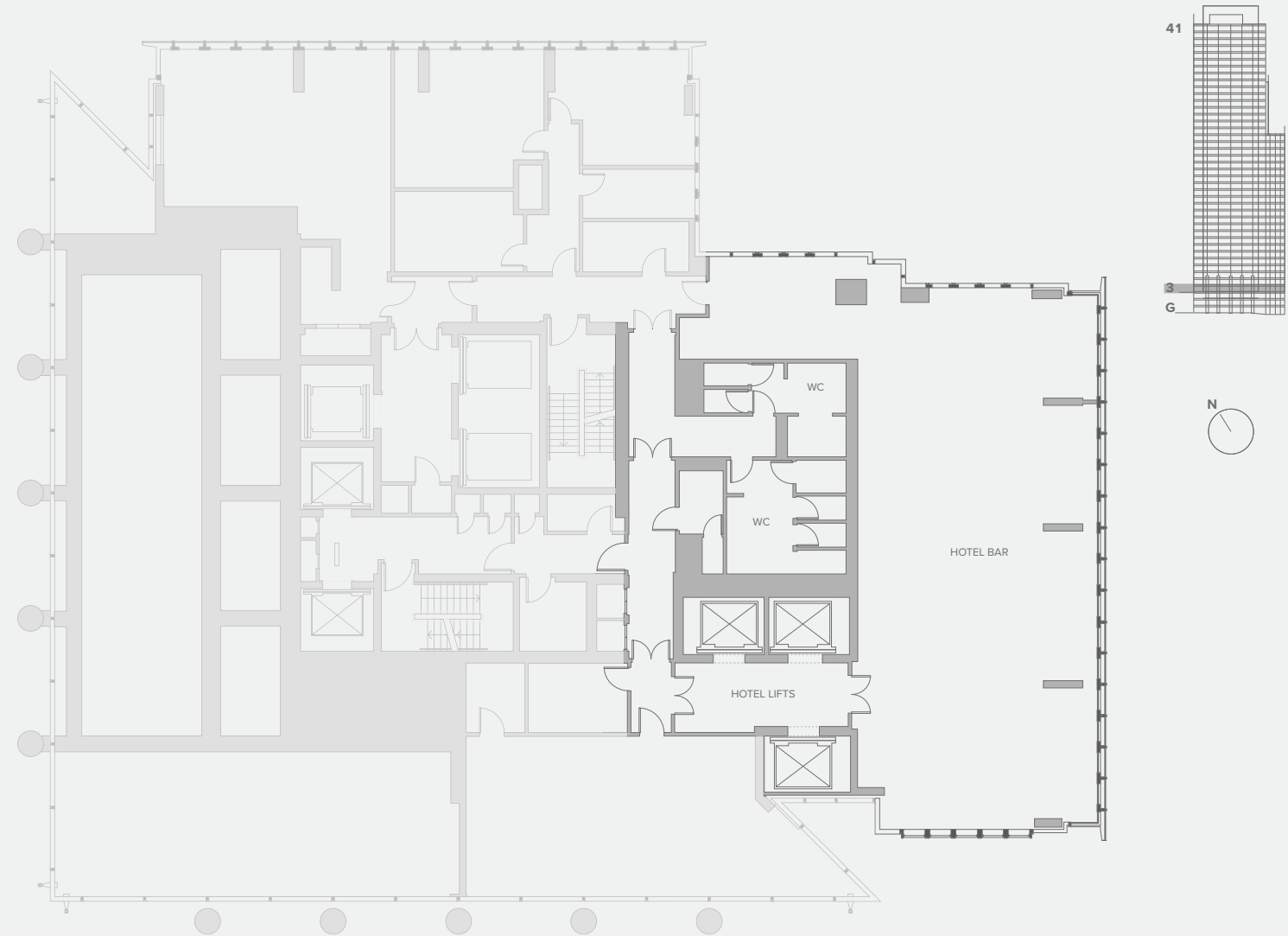


LEVEL 2

- RESTAURANT AND PRIVATE DINING

All plans and images contained in this brochure are indicative only and must not be relied upon as being a true or accurate depiction of the relevant scene or area. Specifications, including measurements, dimensions, sizes and distances are approximate only and subject to change at any time without notice. Please note that the units come in different sizes and configurations depending on location within the building.

AMENITIES



LEVEL 3

HOTEL BAR

All plans and images contained in this brochure are indicative only and must not be relied upon as being a true or accurate depiction of the relevant scene or area. Specifications, including measurements, dimensions, sizes and distances are approximate only and subject to change at any time without notice. Please note that the units come in different sizes and configurations depending on location within the building.

AMENITIES

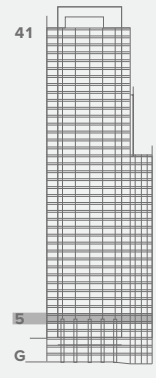
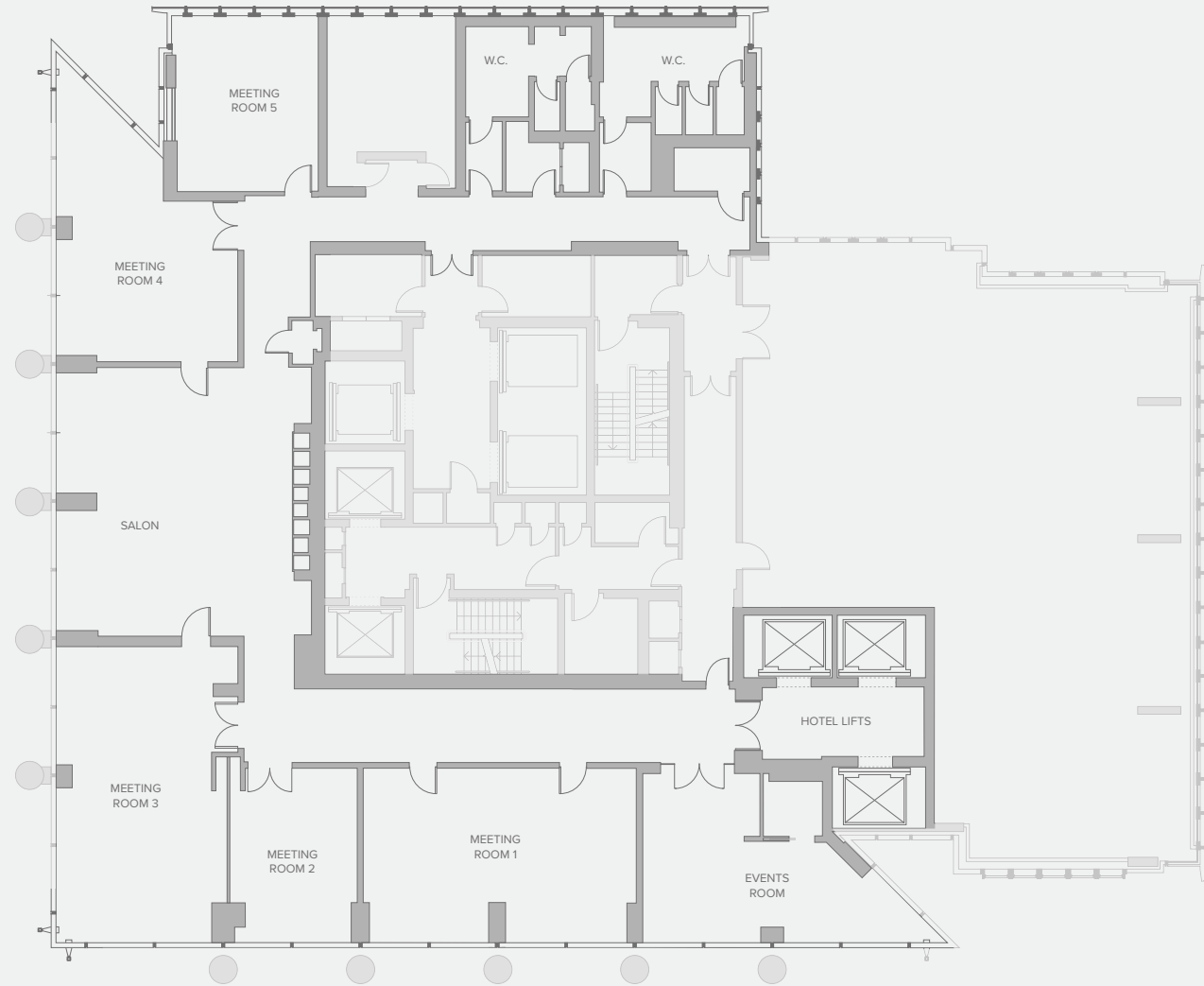


LEVEL 4

SWIMMING POOL
GYMNASIUM
WELLNESS FACILITIES
● Exclusive residents' amenities

All plans and images contained in this brochure are indicative only and must not be relied upon as being a true or accurate depiction of the relevant scene or area. Specifications, including measurements, dimensions, sizes and distances are approximate only and subject to change at any time without notice. Please note that the units come in different sizes and configurations depending on location within the building.

AMENITIES

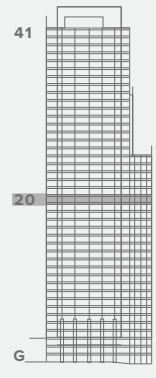
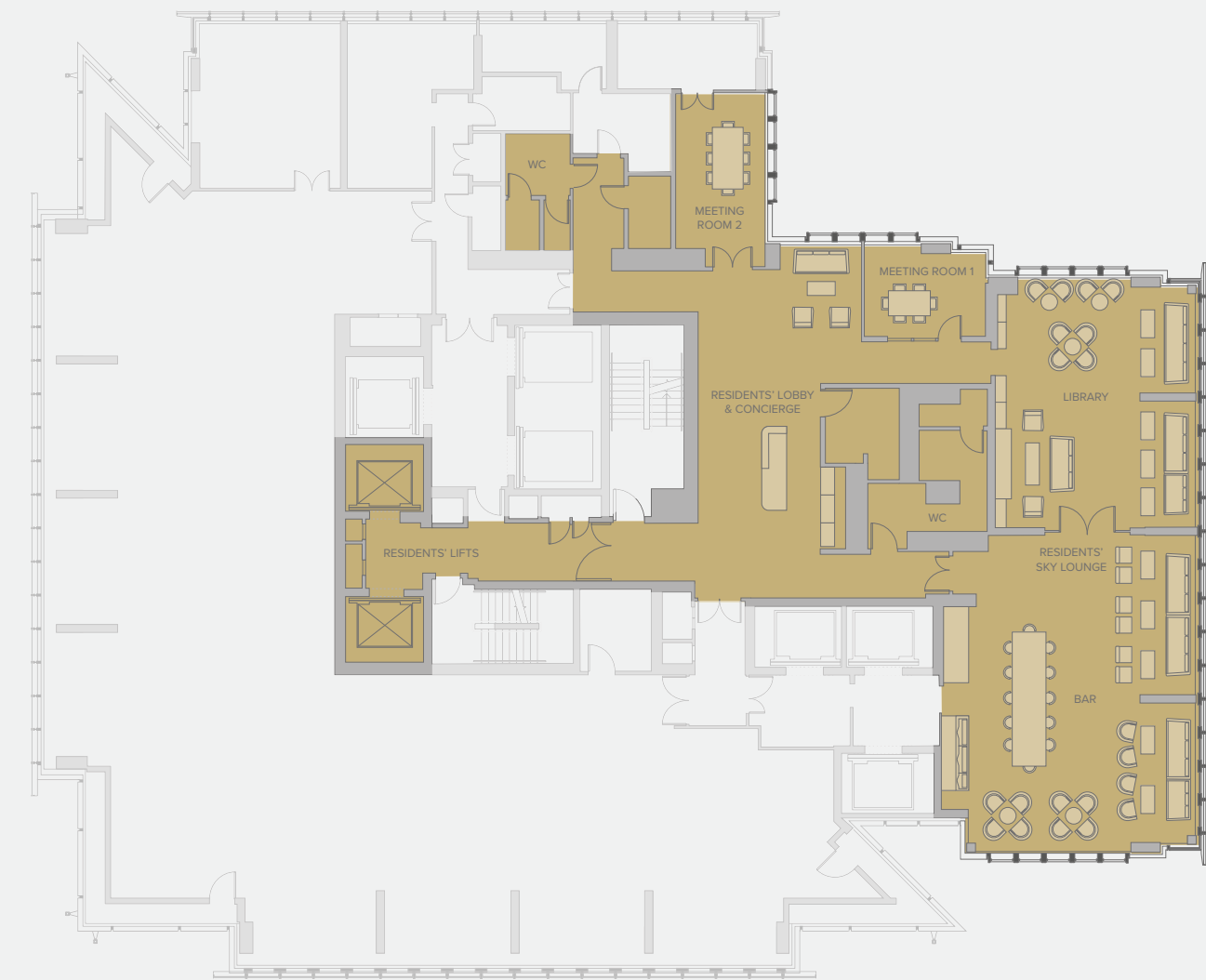


LEVEL 5

BUSINESS CENTRE

All plans and images contained in this brochure are indicative only and must not be relied upon as being a true or accurate depiction of the relevant scene or area. Specifications, including measurements, dimensions, sizes and distances are approximate only and subject to change at any time without notice. Please note that the units come in different sizes and configurations depending on location within the building.

AMENITIES



LEVEL 20

RESIDENTS' CONCIERGE AND SKY LOUNGE

● Exclusive residents' amenities

All plans and images contained in this brochure are indicative only and must not be relied upon as being a true or accurate depiction of the relevant scene or area. Specifications, including measurements, dimensions, sizes and distances are approximate only and subject to change at any time without notice. Please note that the units come in different sizes and configurations depending on location within the building.

AMENITIES



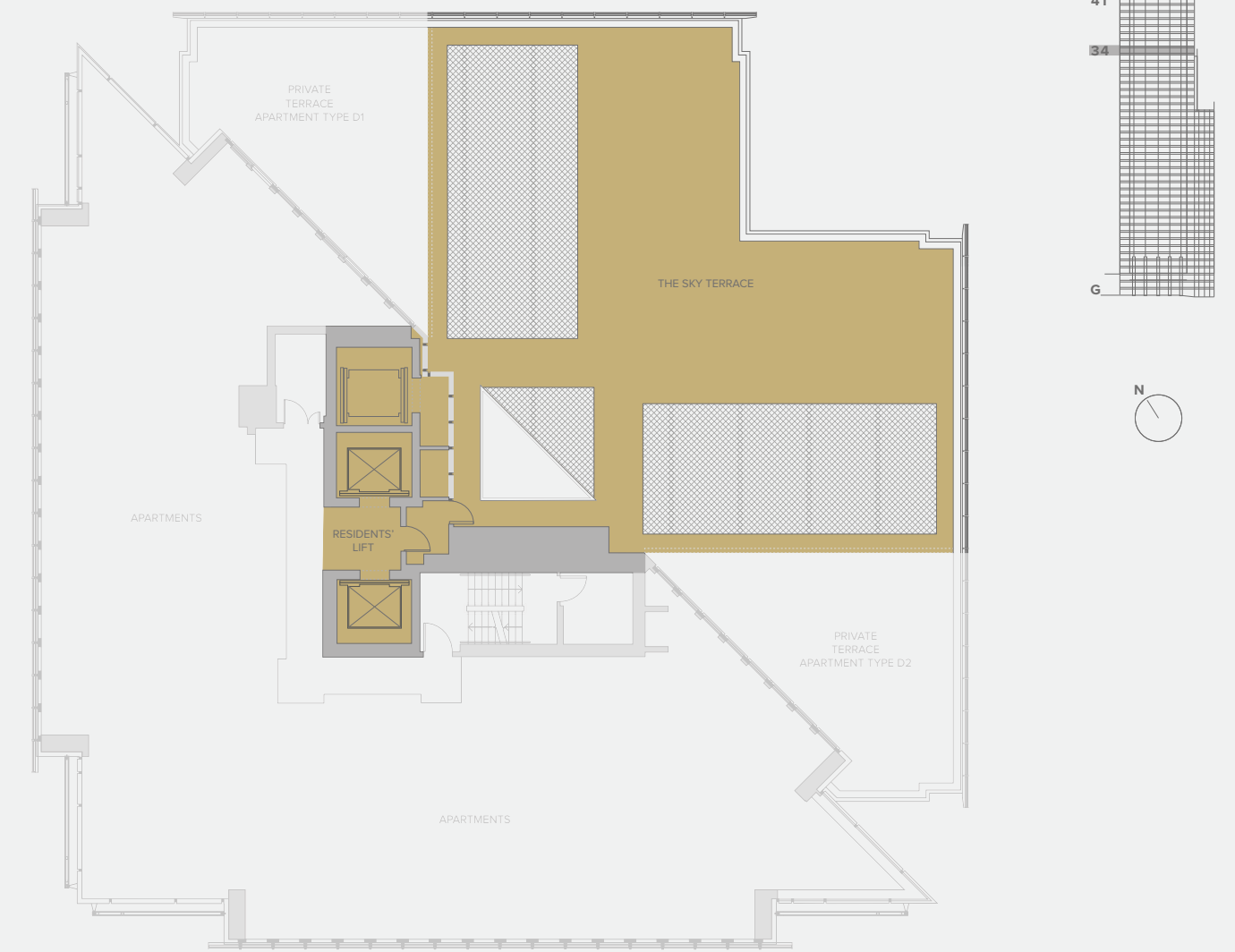
LEVEL 33

CLUB ROOM

● Exclusive residents' amenities

All plans and images contained in this brochure are indicative only and must not be relied upon as being a true or accurate depiction of the relevant scene or area. Specifications, including measurements, dimensions, sizes and distances are approximate only and subject to change at any time without notice. Please note that the units come in different sizes and configurations depending on location within the building.

AMENITIES



LEVEL 34

THE SKY TERRACE

● Exclusive residents' amenities

All plans and images contained in this brochure are indicative only and must not be relied upon as being a true or accurate depiction of the relevant scene or area. Specifications, including measurements, dimensions, sizes and distances are approximate only and subject to change at any time without notice. Please note that the units come in different sizes and configurations depending on location within the building.



THE SKY RESIDENCES

Live Above the Hustle of the City

One Bishopsgate Plaza has a collection of one, two and three bedroom apartments with a variety of layouts. With many offering uninterrupted views across central London, these are homes you will long to return to – and where guests will love to visit.

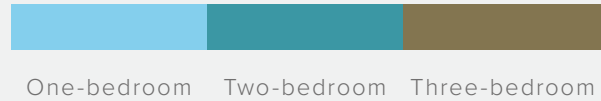
A home at this height is defined by its expansive views and natural light. The design maximises enjoyment of both, with floor-to-ceiling windows and open-plan spaces.

A selection of apartments offer a full-height, glazed corner window – a true spectacle in your very own home.

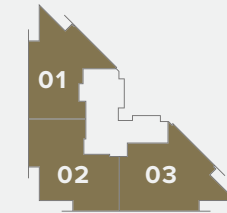
The residents' sky terrace on Level 34 is the perfect viewing platform offering far reaching views of the River Thames, Tower Bridge and the Tower of London with Canary Wharf set in the distance beyond.

APARTMENT SCHEDULE

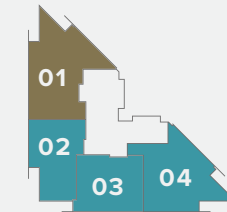
		Apartment										
		01	02	03	04	05	06	07	08	09	10	11
Level	41	D1	D3	D2								
	40	D1	D3	D2								
	39	D1	D3	D2								
	38	D1	D3	D2								
	37	D1	B6	B2	C2							
	36	D1	B6	B2	C2							
	35	D1	B6	B2	C2							
	34	D1	D3	D2								
	33	A4	A1	A2	A3	B3	B4	A5	B8	B1	B7	
	32	A4	A1	A2	A3	B3	B4	A5	B8	B1	B7	
	31	A4	A1	A2	A3	B3	B4	A5	B8	B1	B7	
	30	A4	A1	A2	A3	B3	B4	A5	B8	B1	B7	
	29	A4	A1	A2	A3	B3	B4	A5	B8	B1	B7	
	28	A4	A1	A2	A3	B3	B4	A5	B8	B1	B7	
	27	A4	A1	A2	A3	B3	B4	A5	B8	B1	B7	
	26	A4	A1	A2	A3	B3	B4	A5	B8	B1	B7	
	25	A4	A1	A2	A3	B3	B4	A5	B8	C4	B10-A	B11-A
	24	A4	A1	A2	A3	B3	B4	A5	B8	C4	B10-A	B11-A
	23	A4	A1	A2	A3	B3	B4	A5	B8	C4	B10	B11
	22	A4	A1	A2	A3	B3	B4	A5	B8	C4	B10	B11
	21	A4	A1	A2	A3	B3	B4	A5	B8	A6		
	20	RESIDENTS' CONCIERGE AND SKY LOUNGE										



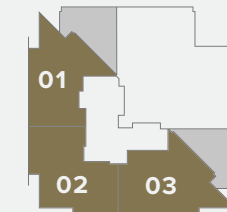
TYPICAL FLOOR PLANS



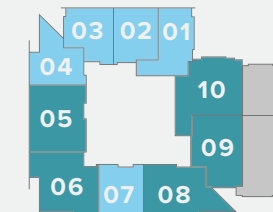
Levels 38 – 41



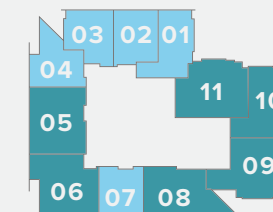
Levels 35 – 37



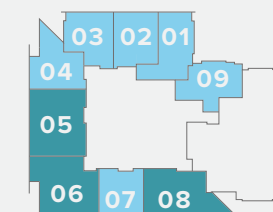
Level 34
(with terraces)



Levels 26 – 33
(terraces on level 26 only)



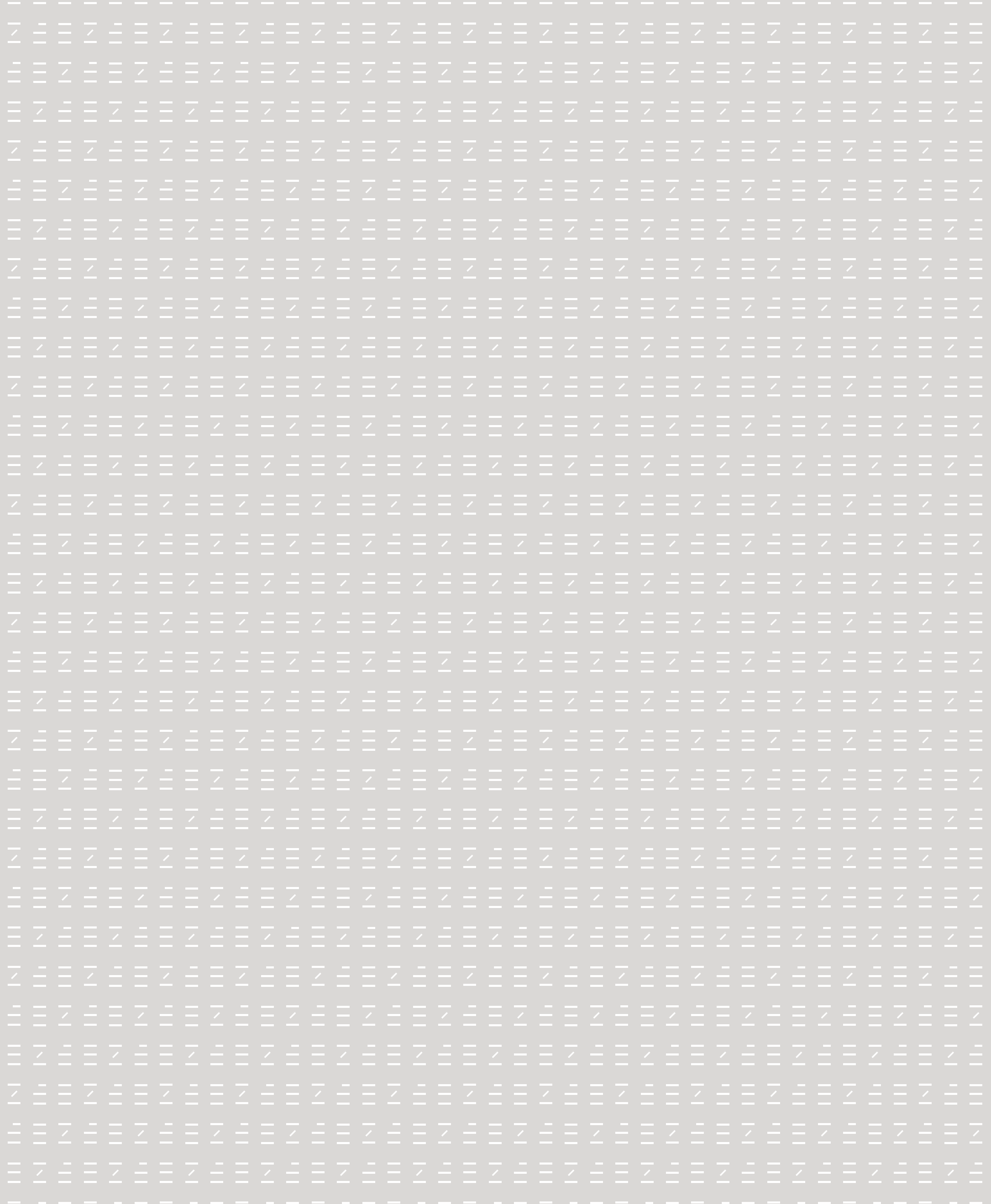
Levels 22 – 25



Level 21

Private Apartment Terrace





ONE-BEDROOM APARTMENTS

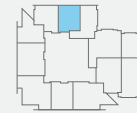
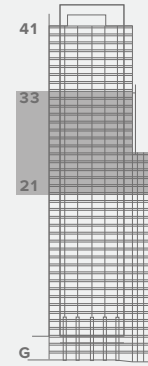
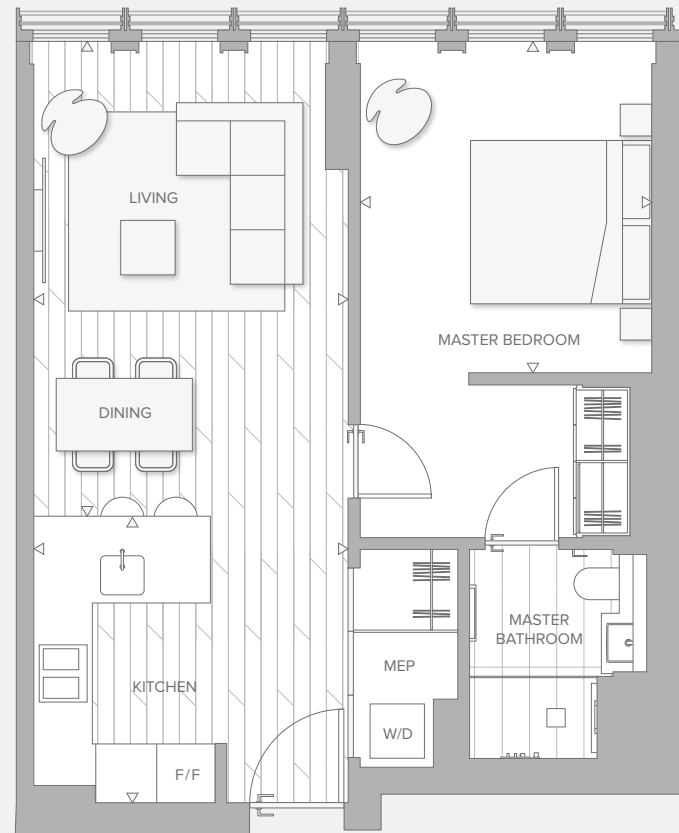
One-bedroom apartments at One Bishopsgate Plaza are arranged on levels 21 to 33 and benefit from intelligent space planning and the same open-plan design as larger apartments.

The dual aspect layouts of selected apartments create an abundance of natural light, blurring the boundary between inside and out. Master bedrooms have been designed with a dressing area and en suite bathroom, creating a spacious suite that feels like a sanctuary.



Exceptional views from the Sky Residences

ONE BEDROOM



TYPE A1

LEVELS 21 – 33

21.02 / 22.02 / 23.02 / 24.02 / 25.02 / 26.02 /
27.02 / 28.02 / 29.02 / 30.02 / 31.02 / 32.02 / 33.02

56.1m² / 604ft²

Kitchen 3.5 x 3.2m / 11'5" x 10'4"

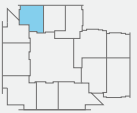
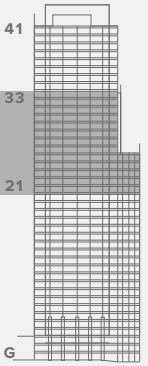
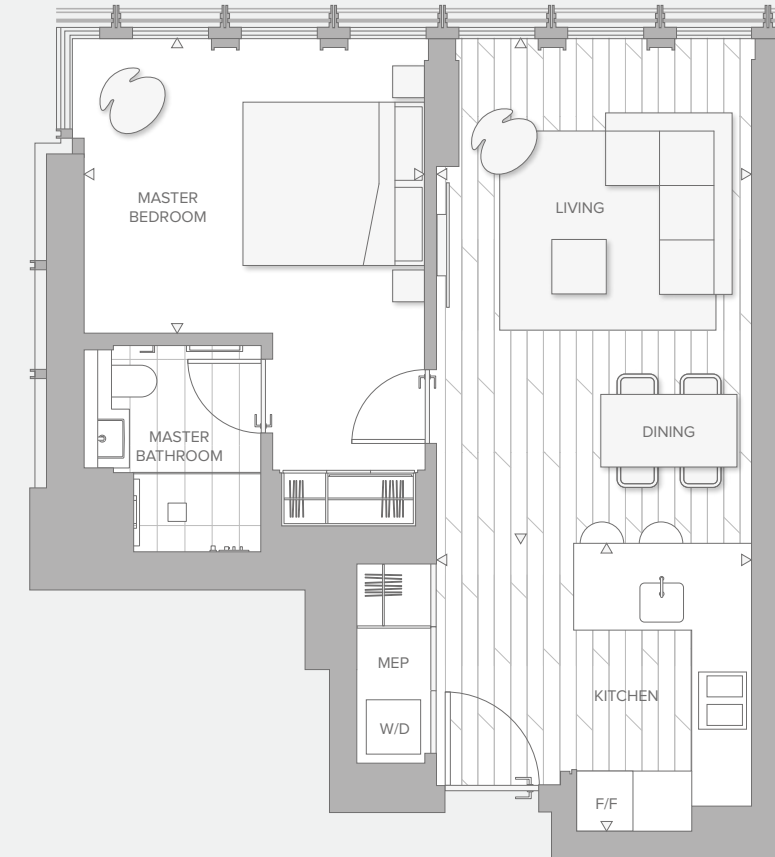
Living 5.2 x 3.5m / 17'2" x 11'5"

Master bedroom 3.7 x 3.2m / 12'0" x 10'7"

F/F - Fridge Freezer, W/D - Washer Dryer, MEP - Mechanical & Electrical plant

All plans and images contained in this brochure are indicative only and must not be relied upon as being a true or accurate depiction of the relevant scene or area. Specifications, including measurements, dimensions, sizes and distances are approximate only and subject to change at any time without notice. Please note that the units come in different sizes and configurations depending on location within the building.

ONE BEDROOM



TYPE A2

LEVELS 21 – 33

21.03 / 22.03 / 23.03 / 24.03 / 25.03 / 26.03 /
27.03 / 28.03 / 29.03 / 30.03 / 31.03 / 32.03 / 33.03

53.9m² / 580ft²

Kitchen 3.2 x 3.5m / 10'4" x 11'4"

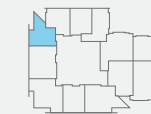
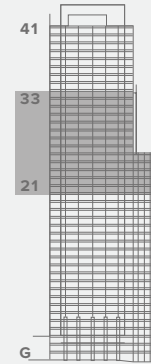
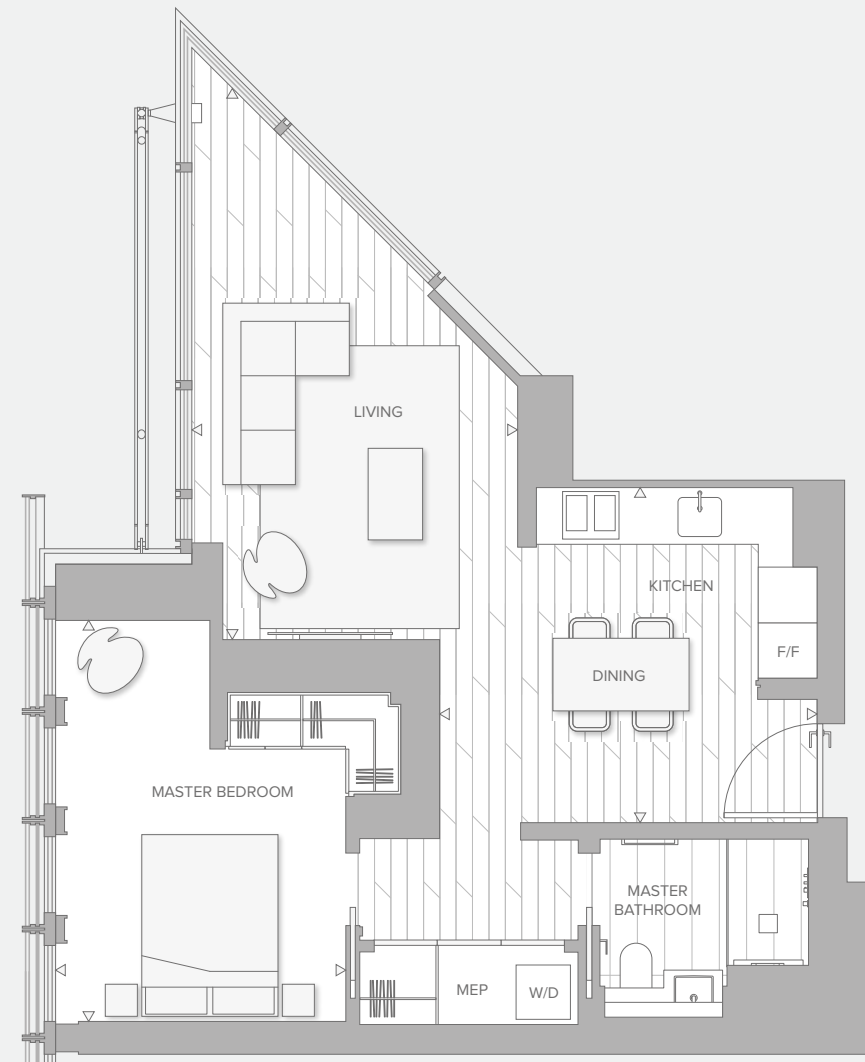
Living 3.5 x 5.6m / 11'5" x 18'3"

Master bedroom 3.3 x 3.7m / 10'8" x 12'3"

F/F - Fridge Freezer, W/D - Washer Dryer, MEP - Mechanical & Electrical plant

All plans and images contained in this brochure are indicative only and must not be relied upon as being a true or accurate depiction of the relevant scene or area. Specifications, including measurements, dimensions, sizes and distances are approximate only and subject to change at any time without notice. Please note that the units come in different sizes and configurations depending on location within the building.

ONE BEDROOM



TYPE A3

LEVELS 21 – 33

21.04 / 22.04 / 23.04 / 24.04 / 25.04 / 26.04 /
27.04 / 28.04 / 29.04 / 30.04 / 31.04 / 32.04 / 33.04

59.7m² / 643ft²

Kitchen 4.2 x 3.8m / 13'8" x 12'4"

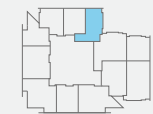
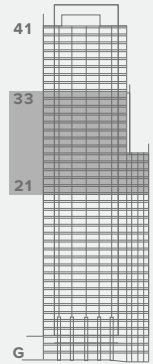
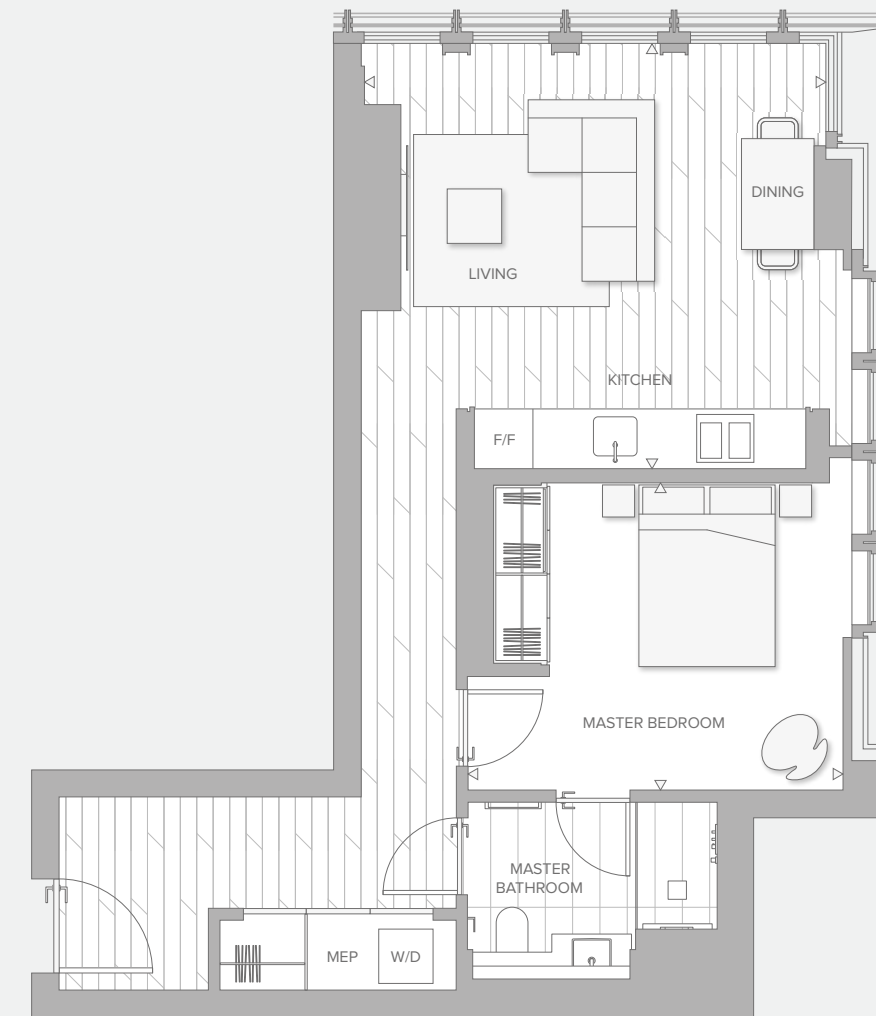
Living 3.6 x 6.2m / 11'10" x 20'3"

Master bedroom 3.2 x 4.4m / 10'6" x 14'5"

F/F - Fridge Freezer, W/D - Washer Dryer, MEP - Mechanical & Electrical plant

All plans and images contained in this brochure are indicative only and must not be relied upon as being a true or accurate depiction of the relevant scene or area. Specifications, including measurements, dimensions, sizes and distances are approximate only and subject to change at any time without notice. Please note that the units come in different sizes and configurations depending on location within the building.

ONE BEDROOM



TYPE A4

LEVELS 21 – 33

21.01 / 22.01 / 23.01 / 24.01 / 25.01 / 26.01 /
27.01 / 28.01 / 29.01 / 30.01 / 31.01 / 32.01 / 33.01

60.6m² / 652ft²

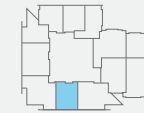
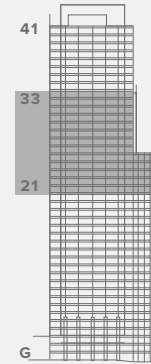
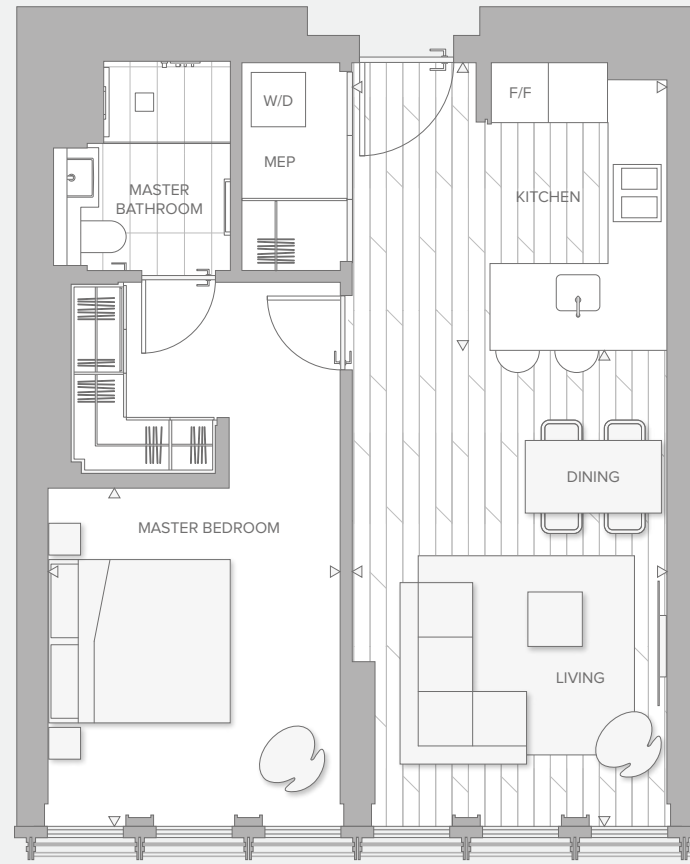
Living/dining/kitchen 5.1 x 4.7m / 16'8" x 15'4"

Master bedroom 4.1 x 3.9m / 13'5" x 12'9"

F/F - Fridge Freezer, W/D - Washer Dryer, MEP - Mechanical & Electrical plant

All plans and images contained in this brochure are indicative only and must not be relied upon as being a true or accurate depiction of the relevant scene or area. Specifications, including measurements, dimensions, sizes and distances are approximate only and subject to change at any time without notice. Please note that the units come in different sizes and configurations depending on location within the building.

ONE BEDROOM



TYPE A5

LEVELS 21 – 33

21.07 / 22.07 / 23.07 / 24.07 / 25.07 / 26.07 /
27.07 / 28.07 / 29.07 / 30.07 / 31.07 / 32.07 / 33.07

59.0m² / 635ft²

Kitchen 3.5 x 3.2m / 11'5" x 10'4"

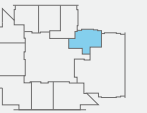
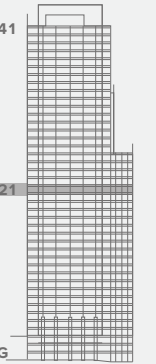
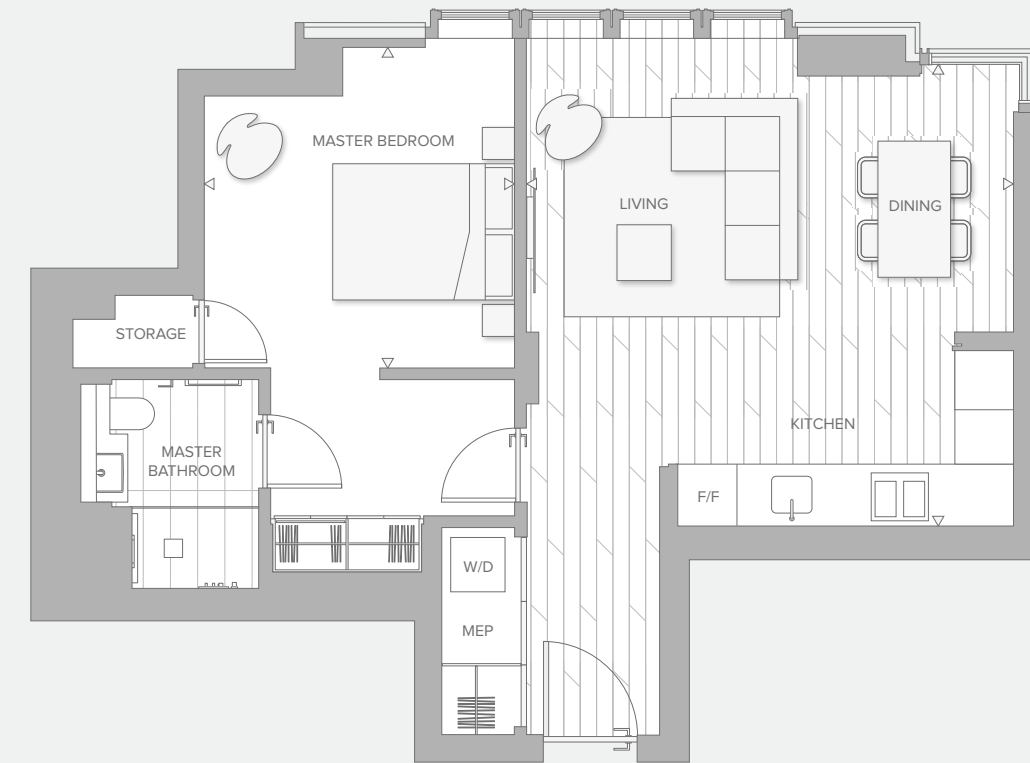
Living 3.5 x 5.3m / 11'5" x 17'3"

Master bedroom 3.2 x 3.7m / 10'7" x 12'3"

F/F - Fridge Freezer, W/D - Washer Dryer, MEP - Mechanical & Electrical plant

All plans and images contained in this brochure are indicative only and must not be relied upon as being a true or accurate depiction of the relevant scene or area. Specifications, including measurements, dimensions, sizes and distances are approximate only and subject to change at any time without notice. Please note that the units come in different sizes and configurations depending on location within the building.

ONE BEDROOM



TYPE A6

LEVEL 21

21.09

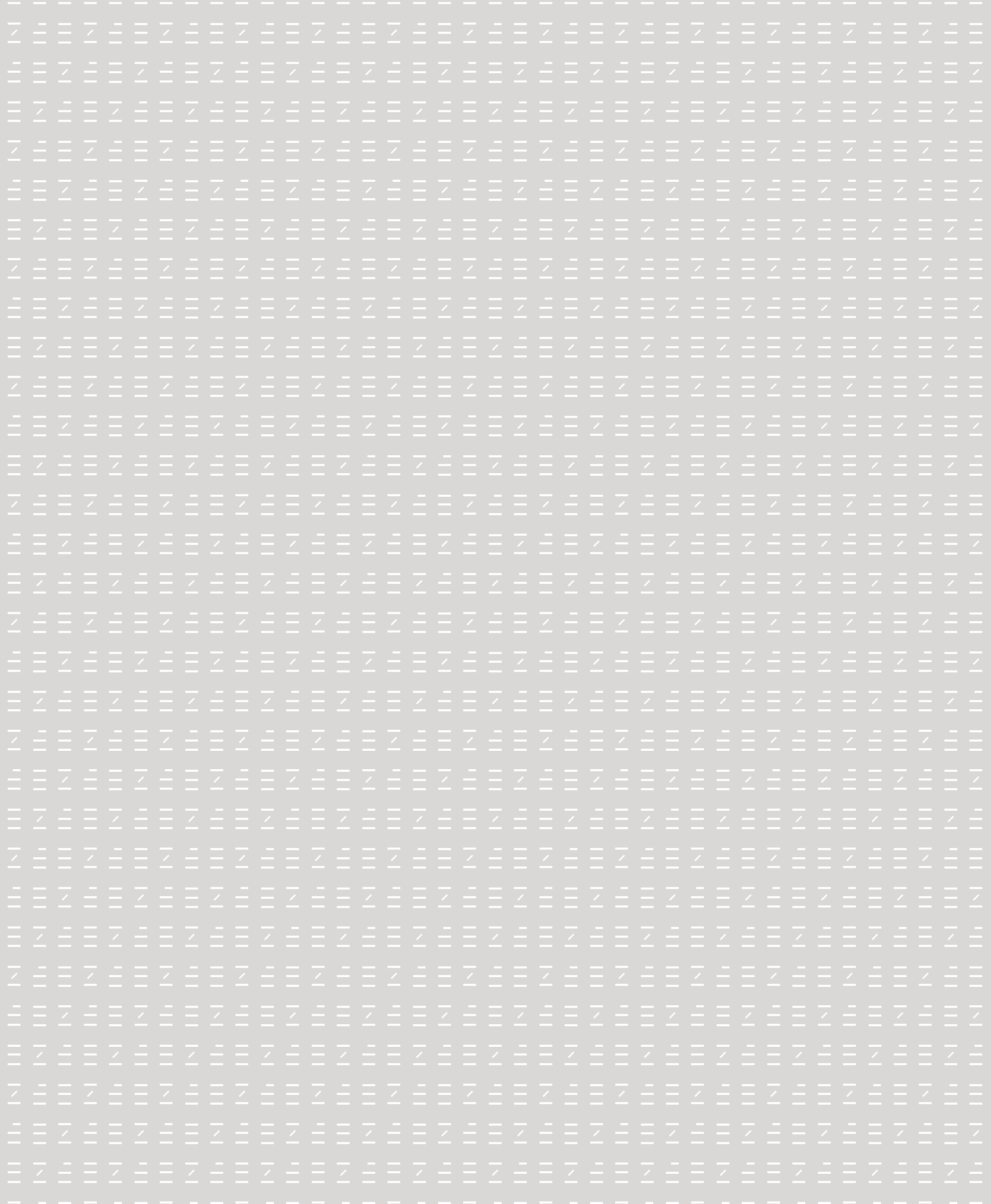
60.0m² / 646ft²

Living/dining/kitchen 5.4 x 5.1m / 17'7" x 16'8"

Master bedroom 3.4 x 3.5m / 11'3" x 11'7"

F/F - Fridge Freezer, W/D - Washer Dryer, MEP - Mechanical & Electrical plant

All plans and images contained in this brochure are indicative only and must not be relied upon as being a true or accurate depiction of the relevant scene or area. Specifications, including measurements, dimensions, sizes and distances are approximate only and subject to change at any time without notice. Please note that the units come in different sizes and configurations depending on location within the building.



TWO-BEDROOM APARTMENTS

Two-bedroom apartments offer the high specification with lateral living so sought after in the City. There is a selection of layouts, including those that feature dining areas and large outdoor terraces that provide generous relaxation space and the opportunity to dine al fresco.

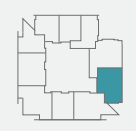
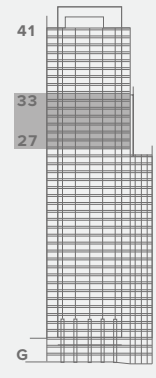
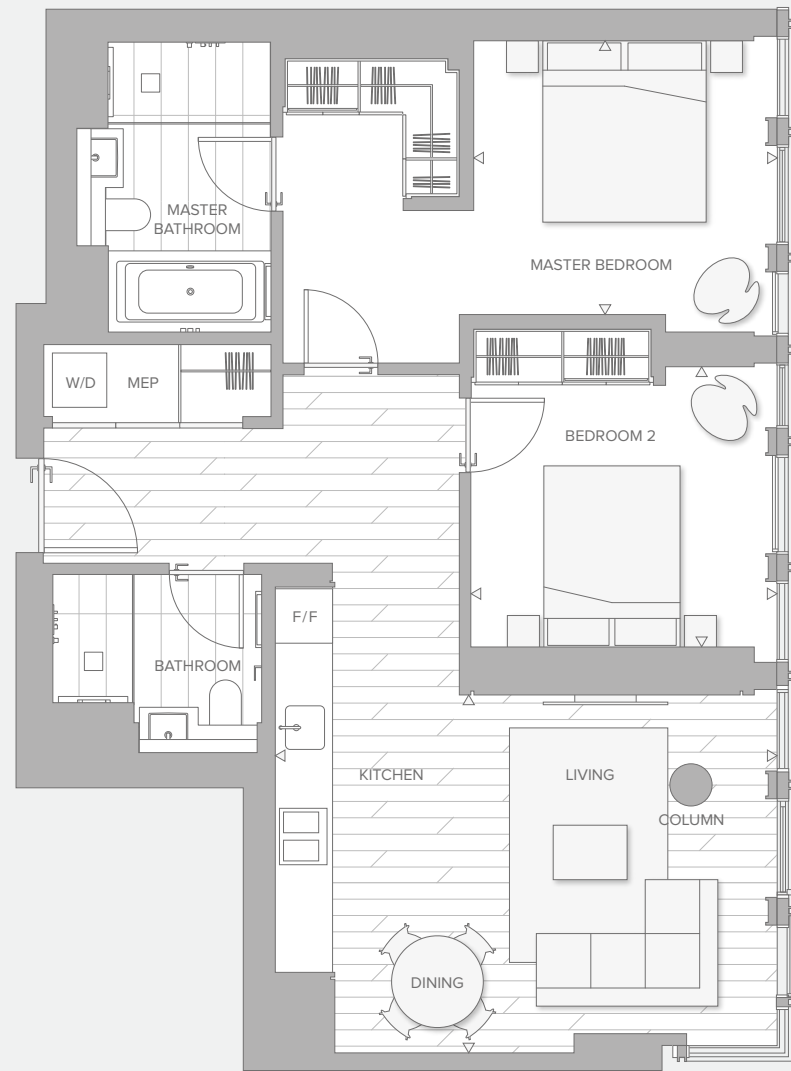
Inside, the living area is open-plan, with distinct zones but no walls to break the flow of light and space. These are homes perfect for both social entertaining and peaceful escape, affording far reaching views across the city.

Master bedrooms have a dressing area and en suite bathroom – a self-contained suite of sorts for perfect privacy. The second bedroom with elegant wardrobes complete the layout.



Two-bedroom apartment living and dining area

TWO BEDROOM



TYPE B1

LEVELS 27 – 33

27.09 / 28.09 / 29.09 / 30.09 / 31.09 / 32.09 / 33.09

81.3m² / 875ft²

Living/dining/kitchen 5.6 x 3.9m / 18'4" x 13'0"

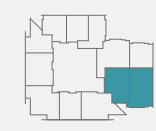
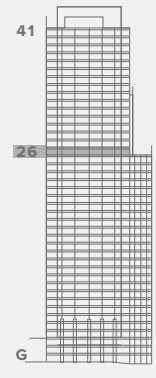
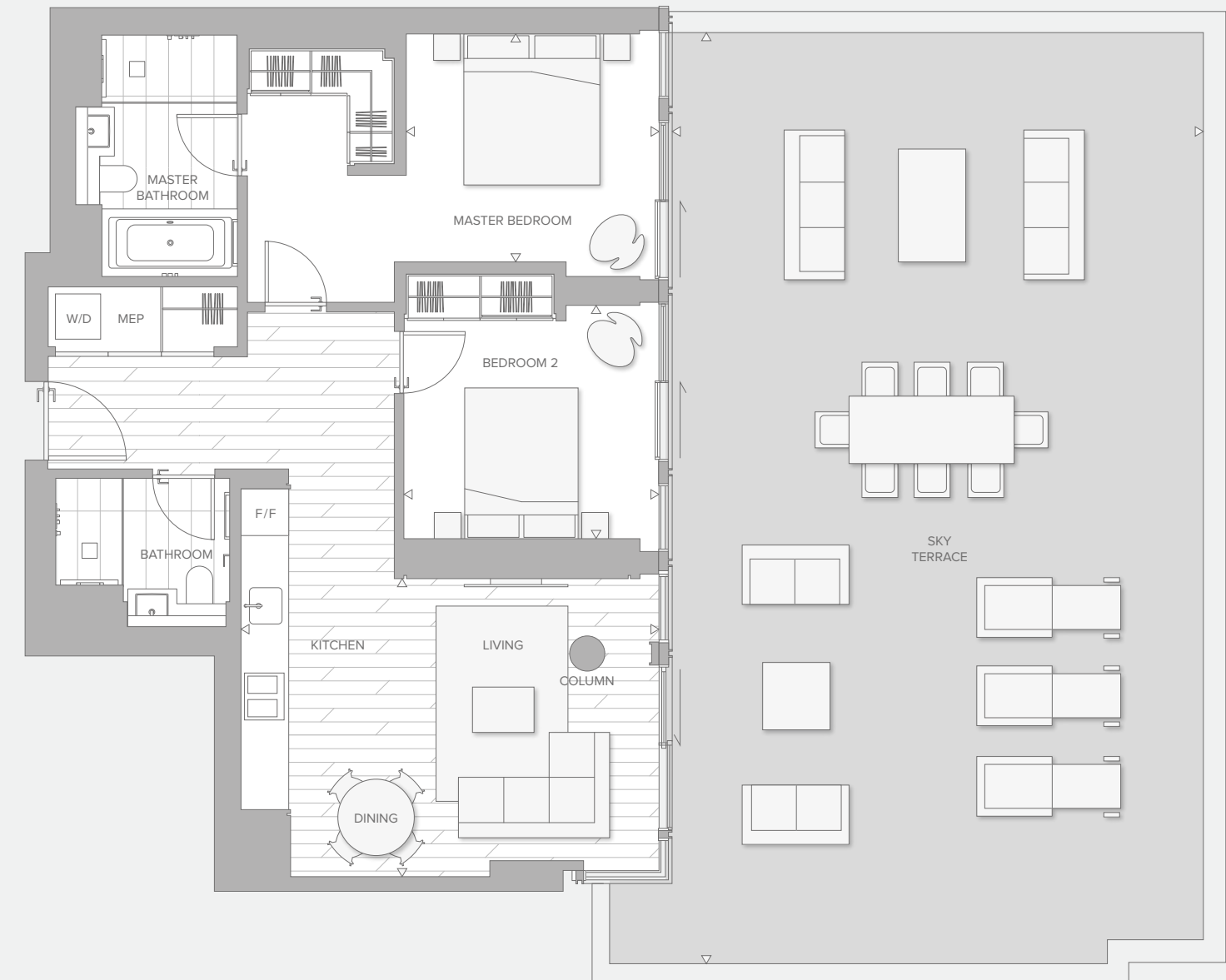
Master bedroom 3.3 x 3.0m / 11'0" x 9'11"

Bedroom 2 3.4 x 3.1m / 11'1" x 10'2"

F/F - Fridge Freezer, W/D - Washer Dryer, MEP - Mechanical & Electrical plant

All plans and images contained in this brochure are indicative only and must not be relied upon as being a true or accurate depiction of the relevant scene or area. Specifications, including measurements, dimensions, sizes and distances are approximate only and subject to change at any time without notice. Please note that the units come in different sizes and configurations depending on location within the building.

TWO BEDROOM



TYPE B1 WITH SKY TERRACE

LEVEL 26

26.09

81.3m² / 875ft²

Terrace 89.8m² / 967ft²

Living/dining/kitchen 5.6 x 3.9m / 18'4" x 13'0"

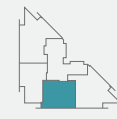
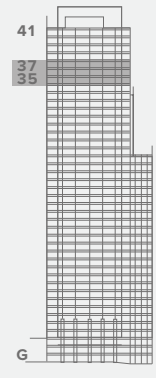
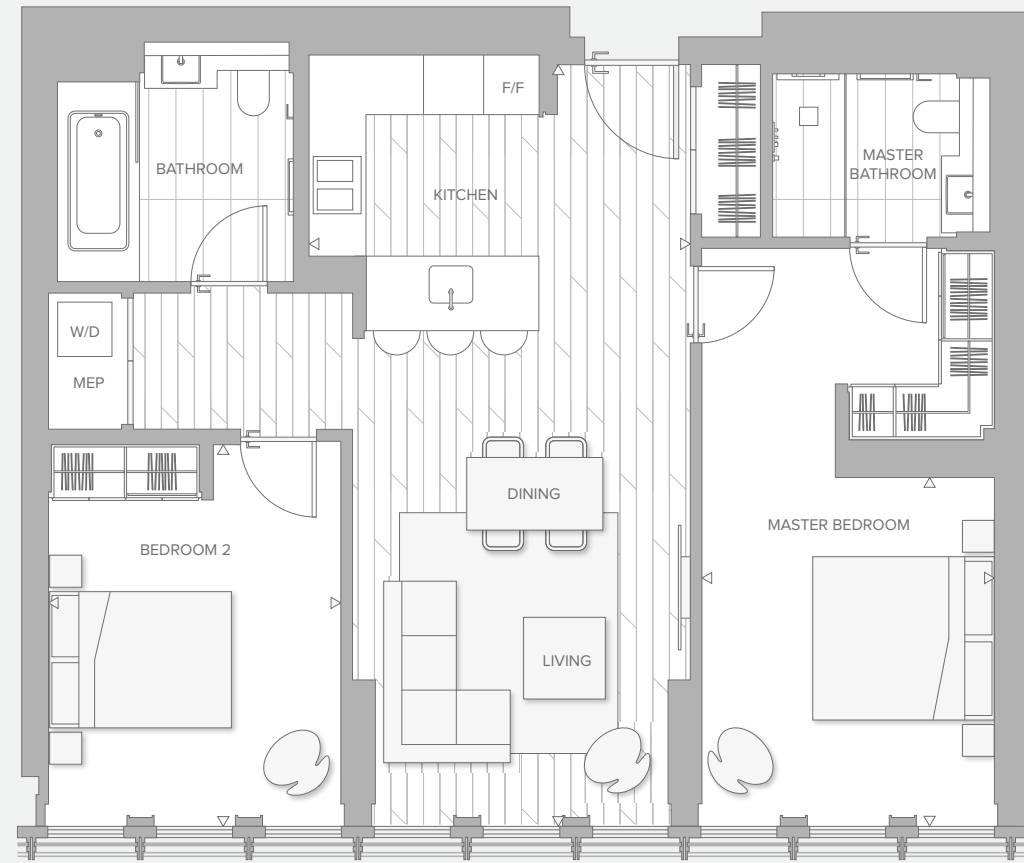
Master bedroom 3.3 x 3.0m / 11'0" x 9'11"

Bedroom 2 3.4 x 3.1m / 11'1" x 10'2"

F/F - Fridge Freezer, W/D - Washer Dryer, MEP - Mechanical & Electrical plant

All plans and images contained in this brochure are indicative only and must not be relied upon as being a true or accurate depiction of the relevant scene or area. Specifications, including measurements, dimensions, sizes and distances are approximate only and subject to change at any time without notice. Please note that the units come in different sizes and configurations depending on location within the building.

TWO BEDROOM



TYPE B2

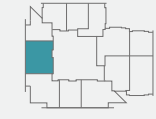
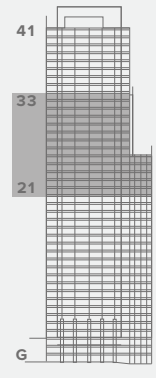
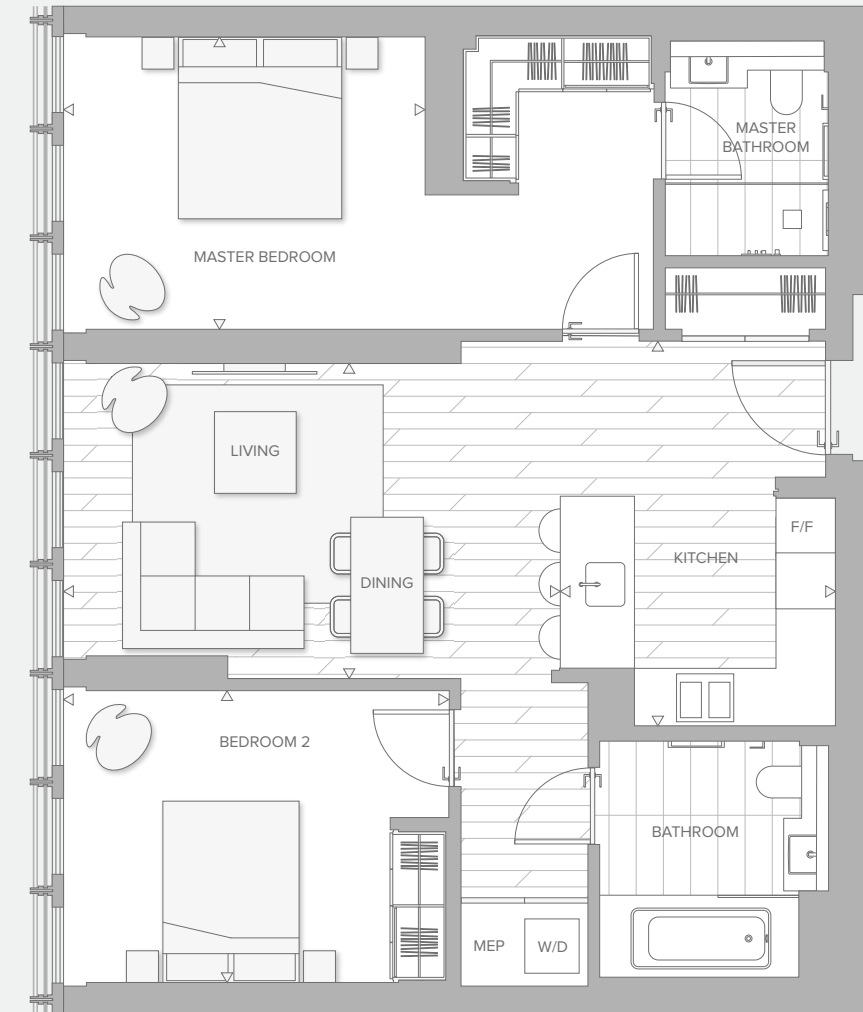
LEVELS 35 – 37
 35.03 / 36.03 / 37.03
 90.3m² / 972ft²

Living/dining/kitchen 4.2 x 8.4m / 13'10" x 27'7"
 Master bedroom 3.2 x 3.9m / 10'7" x 12'8"
 Bedroom 2 3.2 x 4.2m / 10'7" x 13'9"

F/F - Fridge Freezer, W/D - Washer Dryer, MEP - Mechanical & Electrical plant

All plans and images contained in this brochure are indicative only and must not be relied upon as being a true or accurate depiction of the relevant scene or area. Specifications, including measurements, dimensions, sizes and distances are approximate only and subject to change at any time without notice. Please note that the units come in different sizes and configurations depending on location within the building.

TWO BEDROOM



TYPE B3

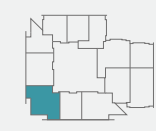
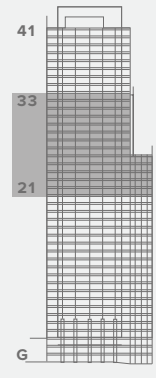
LEVELS 21 – 33
 21.05 / 22.05 / 23.05 / 24.05 / 25.05 / 26.05 /
 27.05 / 28.05 / 29.05 / 30.05 / 31.05 / 32.05 / 33.05
 90.6m² / 975ft²

Kitchen 3.0 x 4.3m / 19'10" x 14'0"
 Living 5.5 x 3.5m / 18'0" x 11'5"
 Master bedroom 4.0 x 3.2m / 13'1" x 10'7"
 Bedroom 2 4.3 x 3.2m / 13'11" x 10'7"

F/F - Fridge Freezer, W/D - Washer Dryer, MEP - Mechanical & Electrical plant

All plans and images contained in this brochure are indicative only and must not be relied upon as being a true or accurate depiction of the relevant scene or area. Specifications, including measurements, dimensions, sizes and distances are approximate only and subject to change at any time without notice. Please note that the units come in different sizes and configurations depending on location within the building.

TWO BEDROOM



TYPE B4

LEVELS 21 – 33

21.06 / 22.06 / 23.06 / 24.06 / 25.06 / 26.06 /
27.06 / 28.06 / 29.06 / 30.06 / 31.06 / 32.06 / 33.06

92.1m² / 991ft²

Living/dining/kitchen 5.4 x 5.3m / 17'10" x 17'7"

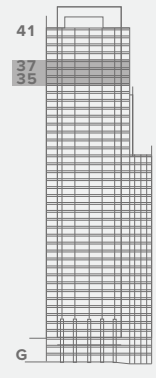
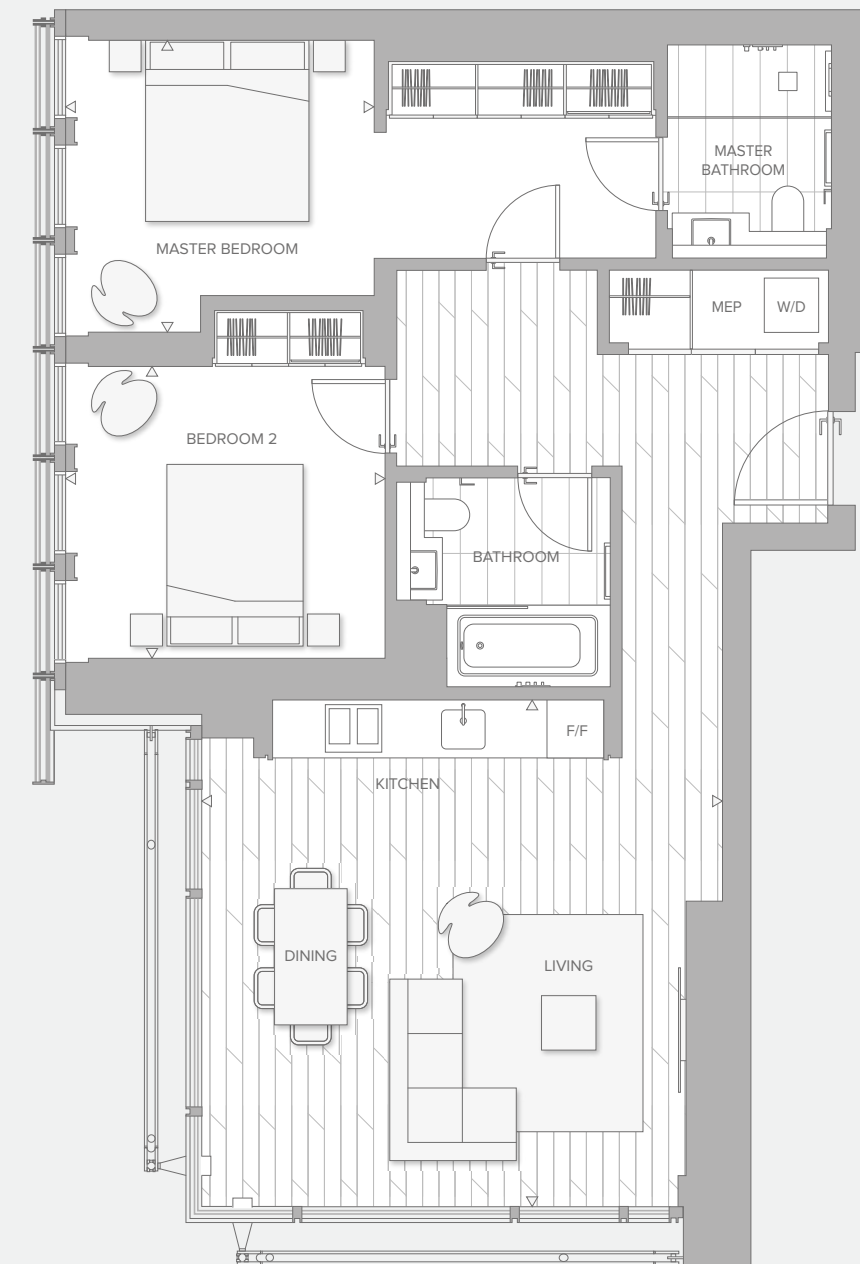
Master bedroom 3.5 x 3.2m / 11'5" x 10'6"

Bedroom 2 3.0 x 3.5m / 19'10" x 11'6"

F/F - Fridge Freezer, W/D - Washer Dryer, MEP - Mechanical & Electrical plant

All plans and images contained in this brochure are indicative only and must not be relied upon as being a true or accurate depiction of the relevant scene or area. Specifications, including measurements, dimensions, sizes and distances are approximate only and subject to change at any time without notice. Please note that the units come in different sizes and configurations depending on location within the building.

TWO BEDROOM



TYPE B6

LEVELS 35 – 37

35.02 / 36.02 / 37.02

92.4m² / 995ft²

Living/dining/kitchen 5.7 x 5.6m / 18'10" x 18'4"

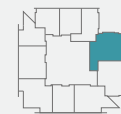
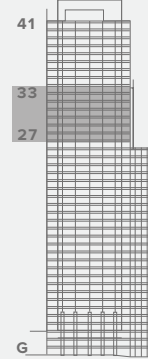
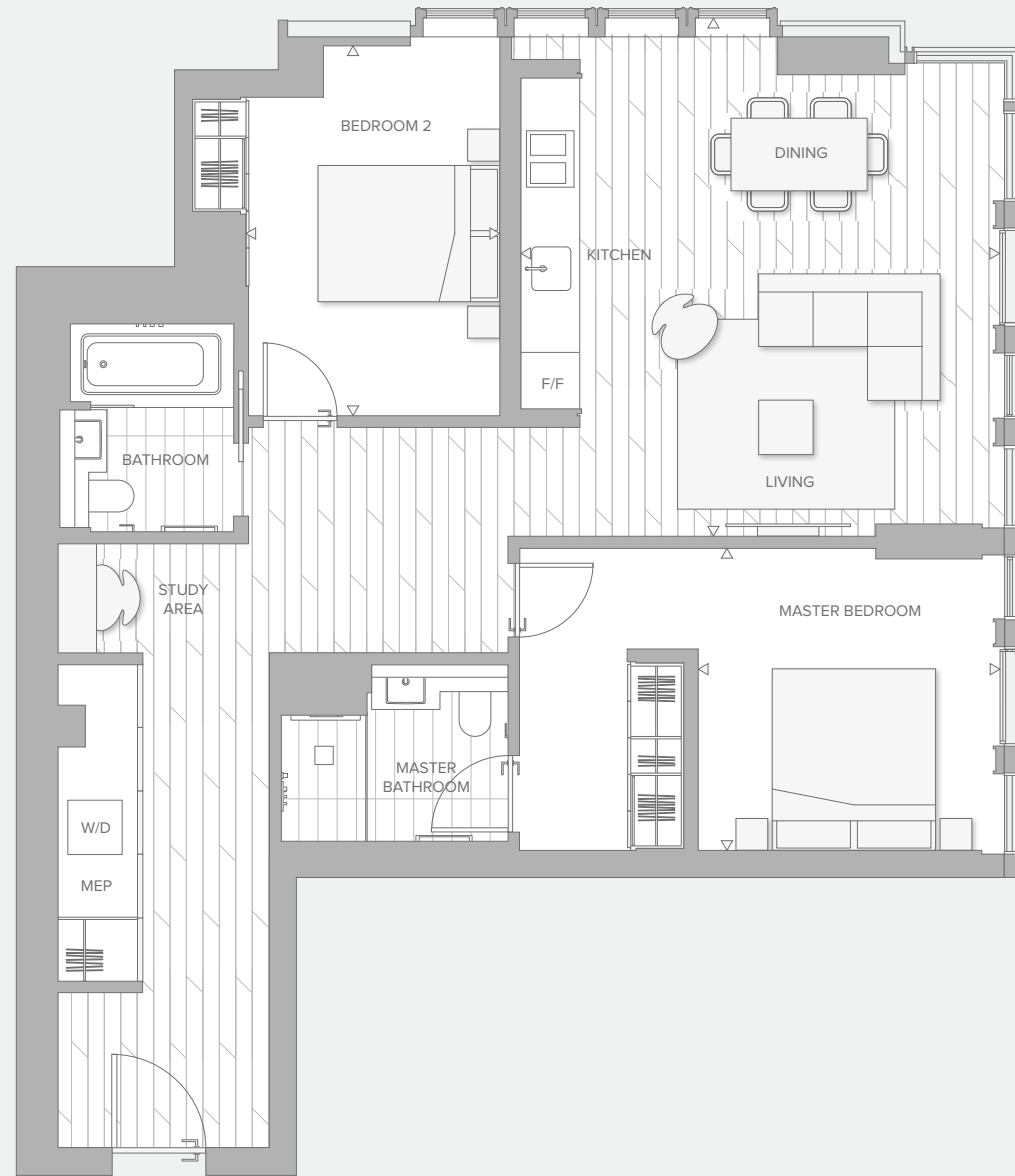
Master bedroom 3.2 x 3.4m / 10'7" x 11'2"

Bedroom 2 3.5 x 3.2m / 11'7" x 10'7"

F/F - Fridge Freezer, W/D - Washer Dryer, MEP - Mechanical & Electrical plant

All plans and images contained in this brochure are indicative only and must not be relied upon as being a true or accurate depiction of the relevant scene or area. Specifications, including measurements, dimensions, sizes and distances are approximate only and subject to change at any time without notice. Please note that the units come in different sizes and configurations depending on location within the building.

TWO BEDROOM



TYPE B7

LEVELS 27 – 33

27.10 / 28.10 / 29.10 / 30.10 / 31.10 / 32.10 / 33.10

96.4m² / 1,038ft²

Living/dining/kitchen 5.3 x 5.7m / 17'6" x 18'8"

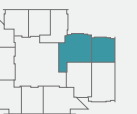
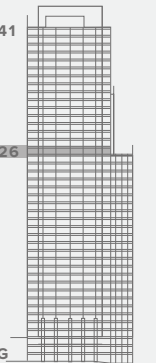
Master bedroom 3.3 x 3.3m / 10'11" x 10'11"

Bedroom 2 2.8 x 4.1m / 9'2" x 13'5"

F/F - Fridge Freezer, W/D - Washer Dryer, MEP - Mechanical & Electrical plant

All plans and images contained in this brochure are indicative only and must not be relied upon as being a true or accurate depiction of the relevant scene or area. Specifications, including measurements, dimensions, sizes and distances are approximate only and subject to change at any time without notice. Please note that the units come in different sizes and configurations depending on location within the building.

TWO BEDROOM



TYPE B7 WITH SKY TERRACE

LEVEL 26

26.10

96.4m² / 1,038ft²

Terrace 54.7m² / 589ft²

Living/dining/kitchen 5.3 x 5.7m / 17'6" x 18'8"

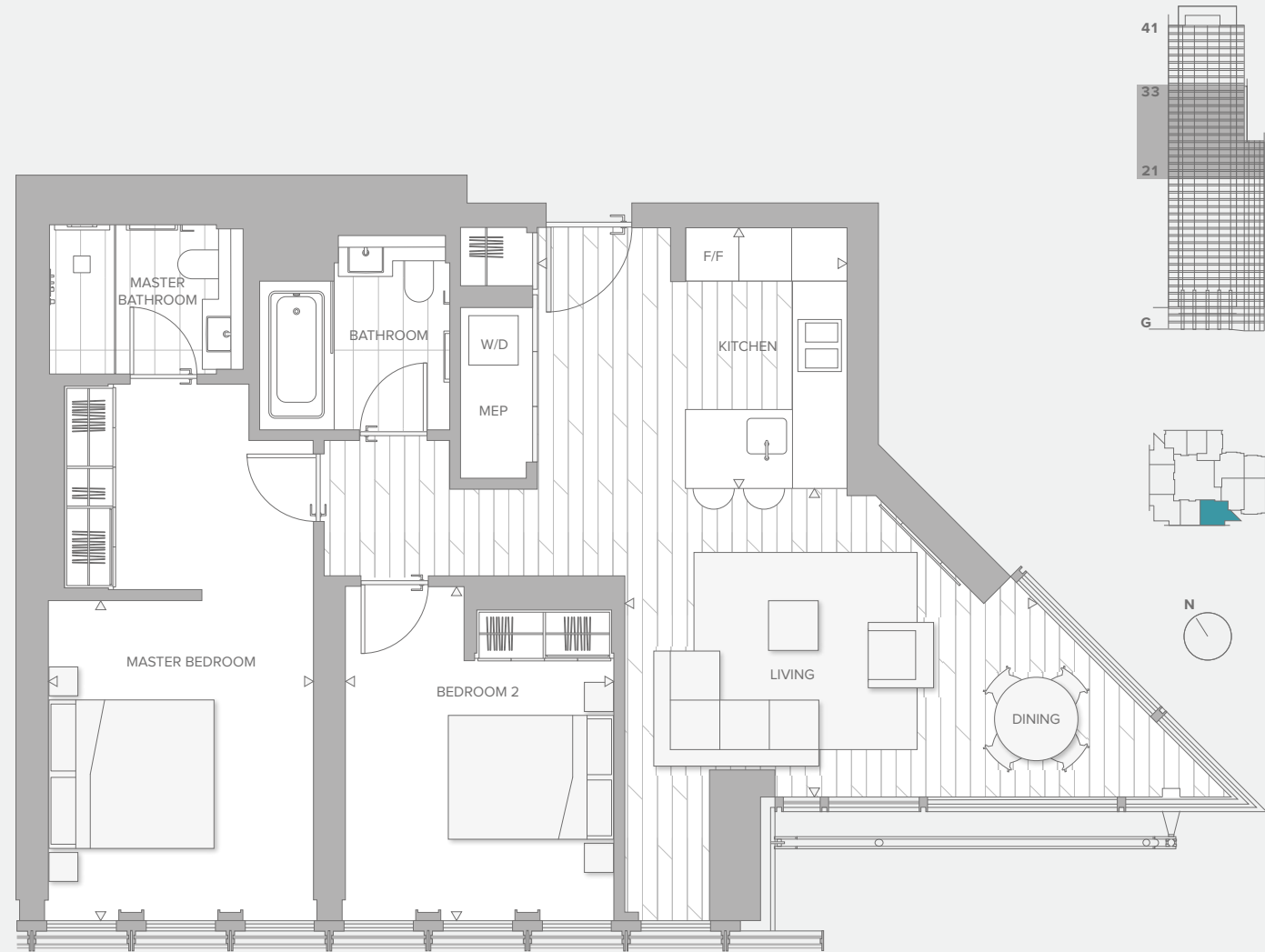
Master bedroom 3.3 x 3.3m / 10'11" x 10'11"

Bedroom 2 2.8 x 4.1m / 9'2" x 13'5"

F/F - Fridge Freezer, W/D - Washer Dryer, MEP - Mechanical & Electrical plant

All plans and images contained in this brochure are indicative only and must not be relied upon as being a true or accurate depiction of the relevant scene or area. Specifications, including measurements, dimensions, sizes and distances are approximate only and subject to change at any time without notice. Please note that the units come in different sizes and configurations depending on location within the building.

TWO BEDROOM



TYPE B8

LEVELS 21 – 33

21.08 / 22.08 / 23.08 / 24.08 / 25.08 / 26.08 /
27.08 / 28.08 / 29.08 / 30.08 / 31.08 / 32.08 / 33.08

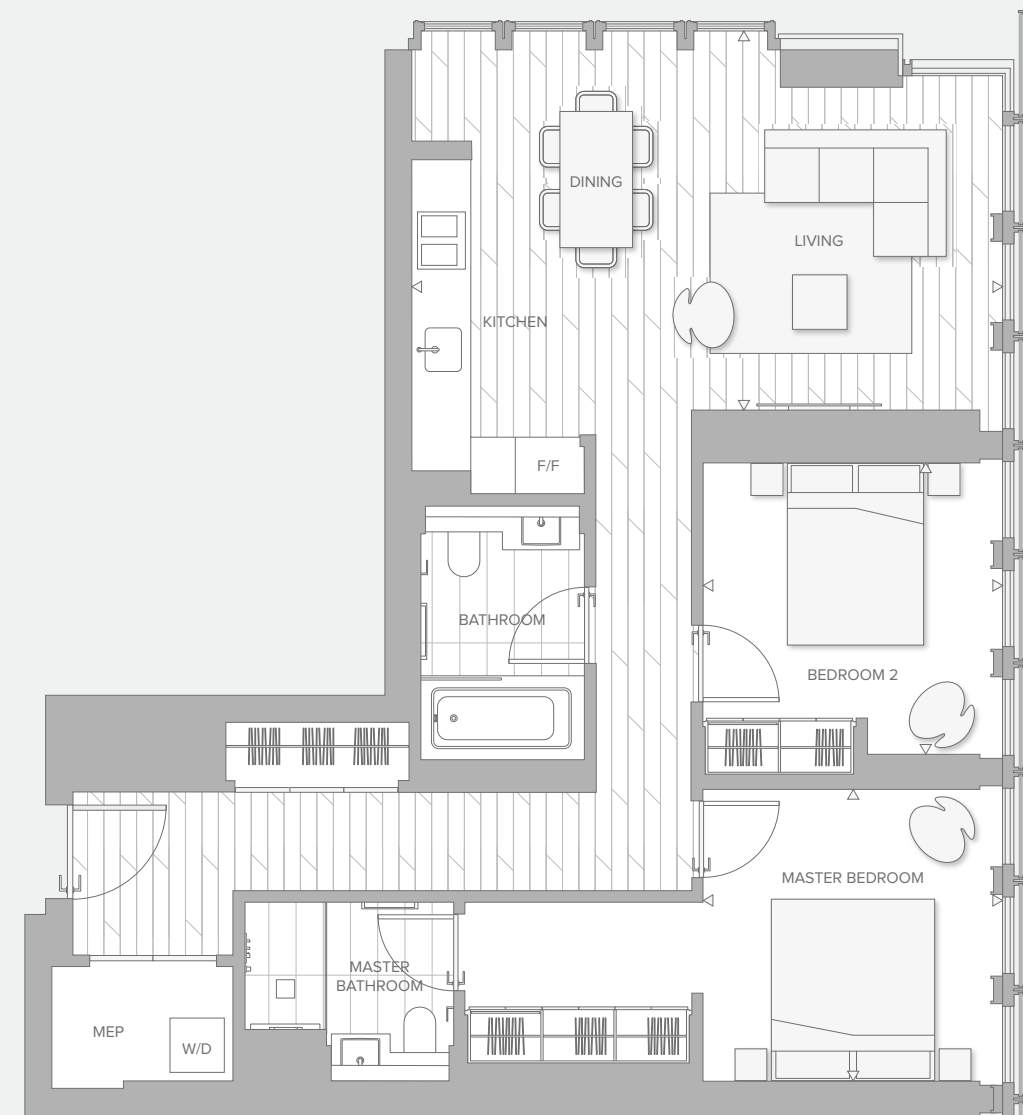
91.9m² / 989ft²

Kitchen 3.8 x 3.2m / 12'5" x 10'4"
Living/dining 4.7 x 3.7m / 15'4" x 12'1"
Master bedroom 3.2 x 3.9m / 10'7" x 12'9"
Bedroom 2 4.0 x 3.3m / 13'3" x 10'8"

F/F - Fridge Freezer, W/D - Washer Dryer, MEP - Mechanical & Electrical plant

All plans and images contained in this brochure are indicative only and must not be relied upon as being a true or accurate depiction of the relevant scene or area. Specifications, including measurements, dimensions, sizes and distances are approximate only and subject to change at any time without notice. Please note that the units come in different sizes and configurations depending on location within the building.

TWO BEDROOM



TYPE B10

LEVELS 22 – 23

22.10 / 23.10

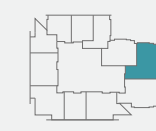
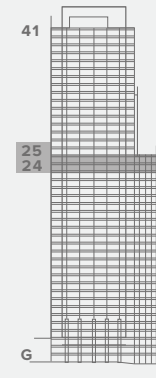
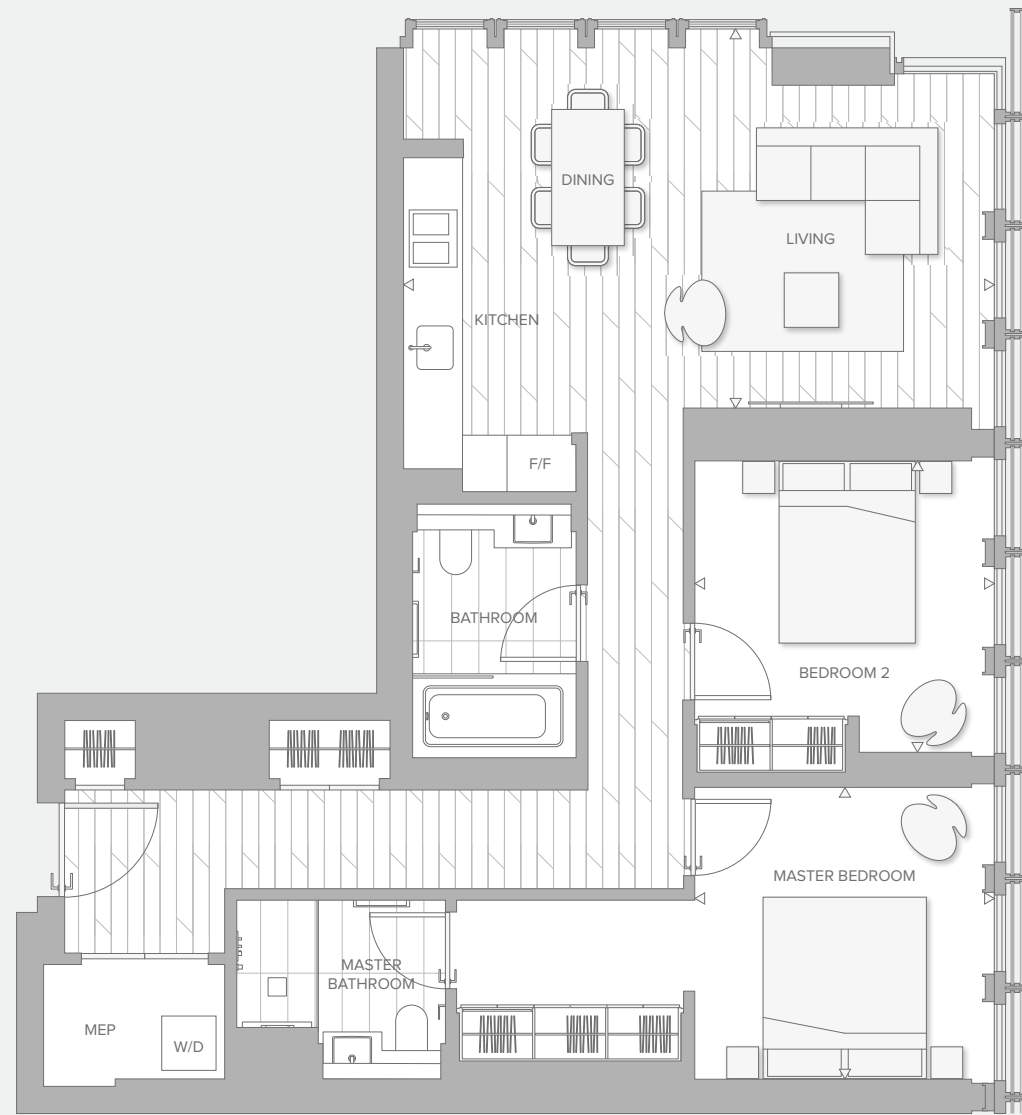
90.1m² / 970ft²

Living/dining/kitchen 6.5 x 4.2m / 21'4" x 13'9"
Master bedroom 3.3 x 3.2m / 10'10" x 10'6"
Bedroom 2 3.3 x 3.2m / 10'10" x 10'6"

F/F - Fridge Freezer, W/D - Washer Dryer, MEP - Mechanical & Electrical plant

All plans and images contained in this brochure are indicative only and must not be relied upon as being a true or accurate depiction of the relevant scene or area. Specifications, including measurements, dimensions, sizes and distances are approximate only and subject to change at any time without notice. Please note that the units come in different sizes and configurations depending on location within the building.

TWO BEDROOM



TYPE B10-A

LEVELS 24 – 25

24.10 / 25.10

90.1m² / 970ft²

Living/dining/kitchen 6.5 x 4.2m / 21'4" x 13'9"

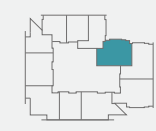
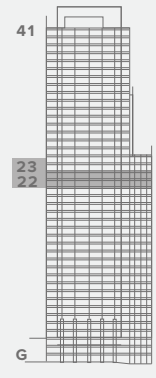
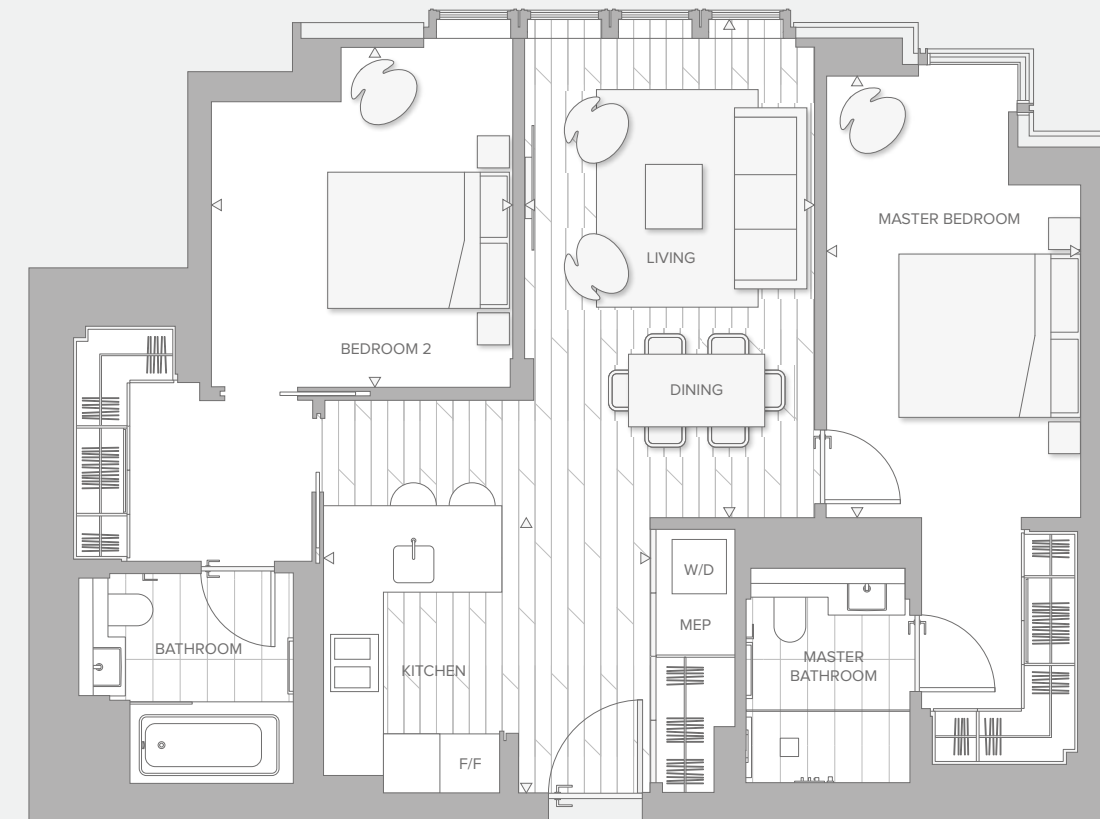
Master bedroom 3.3 x 3.2m / 10'10" x 10'6"

Bedroom 2 3.3 x 3.2m / 10'10" x 10'6"

F/F - Fridge Freezer, W/D - Washer Dryer, MEP - Mechanical & Electrical plant

All plans and images contained in this brochure are indicative only and must not be relied upon as being a true or accurate depiction of the relevant scene or area. Specifications, including measurements, dimensions, sizes and distances are approximate only and subject to change at any time without notice. Please note that the units come in different sizes and configurations depending on location within the building.

TWO BEDROOM



TYPE B11

LEVELS 22 – 23

22.11 / 23.11

86.8m² / 934ft²

Kitchen 3.6 x 3.0m / 11'9" x 9'11"

Living/dining 3.2 x 5.5m / 10'6" x 18'0"

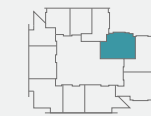
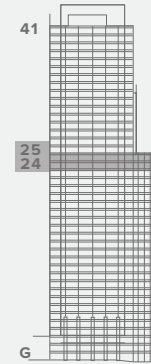
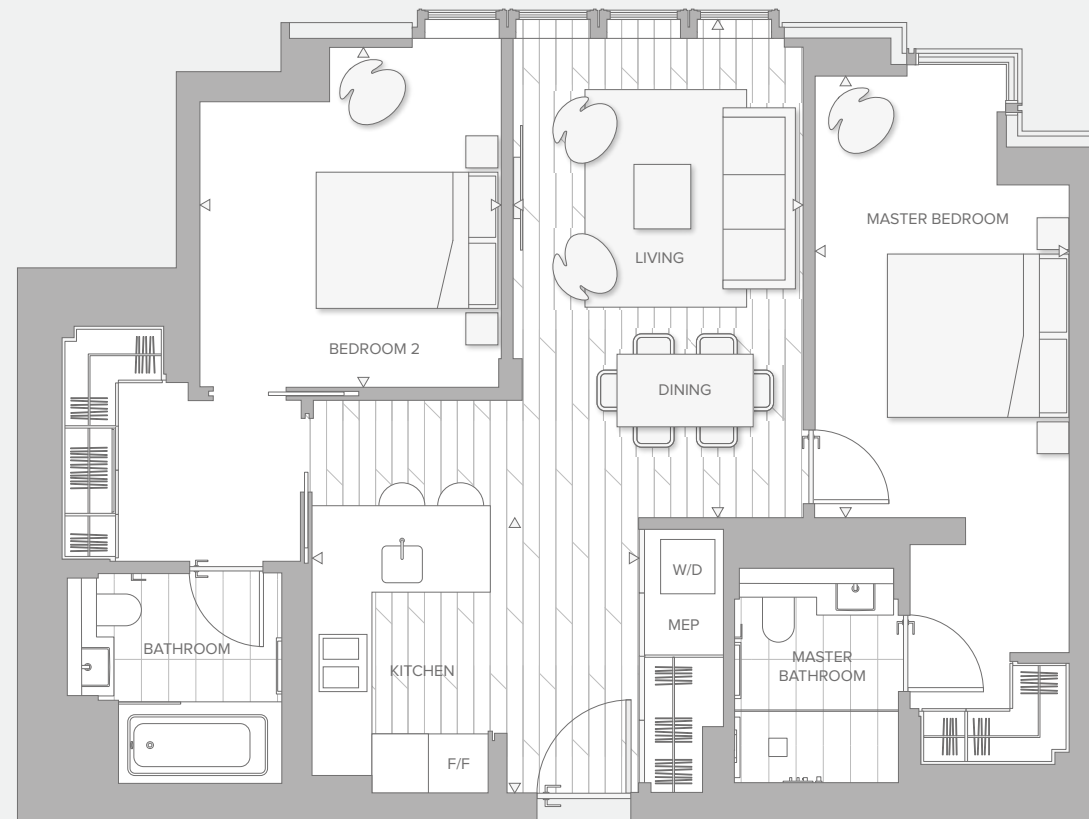
Master bedroom 2.8 x 4.9m / 9'2" x 16'0"

Bedroom 2 3.3 x 3.8m / 10'11" x 12'4"

F/F - Fridge Freezer, W/D - Washer Dryer, MEP - Mechanical & Electrical plant

All plans and images contained in this brochure are indicative only and must not be relied upon as being a true or accurate depiction of the relevant scene or area. Specifications, including measurements, dimensions, sizes and distances are approximate only and subject to change at any time without notice. Please note that the units come in different sizes and configurations depending on location within the building.

TWO BEDROOM



TYPE B11-A

LEVELS 24 – 25

24.11 / 25.11

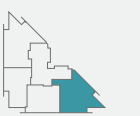
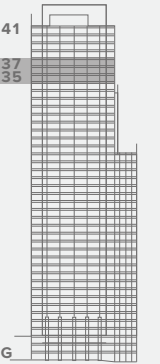
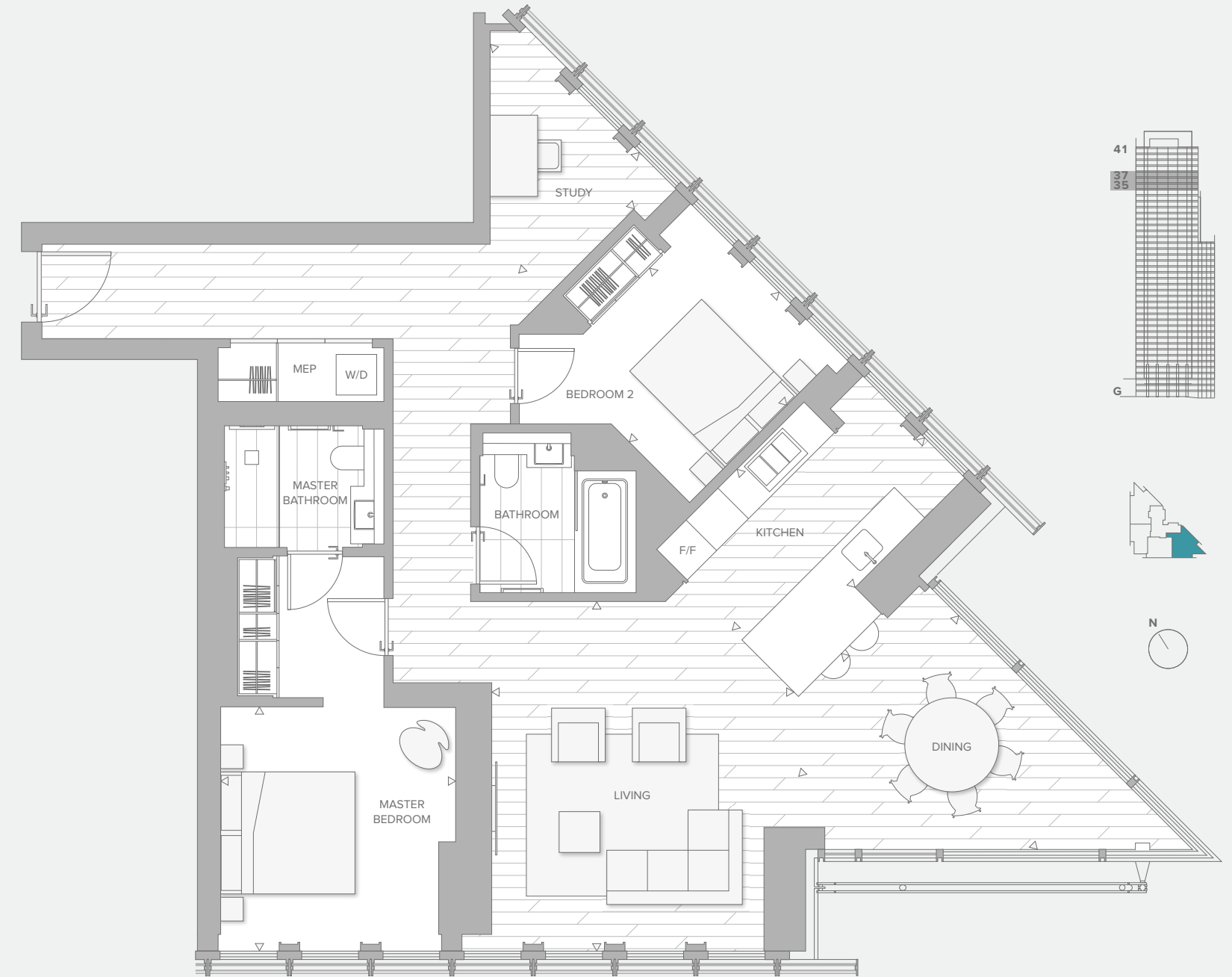
86.8m² / 934ft²

Kitchen	3.6 x 3.0m / 11'9" x 9'11"
Living/dining	3.2 x 5.5m / 10'6" x 18'0"
Master bedroom	2.8 x 4.9m / 9'2" x 16'0"
Bedroom 2	3.3 x 3.8m / 10'11" x 12'4"

F/F - Fridge Freezer, W/D - Washer Dryer, MEP - Mechanical & Electrical plant

All plans and images contained in this brochure are indicative only and must not be relied upon as being a true or accurate depiction of the relevant scene or area. Specifications, including measurements, dimensions, sizes and distances are approximate only and subject to change at any time without notice. Please note that the units come in different sizes and configurations depending on location within the building.

TWO BEDROOM WITH STUDY



TYPE C2

LEVELS 35 – 37

35.04 / 36.04 / 37.04

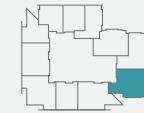
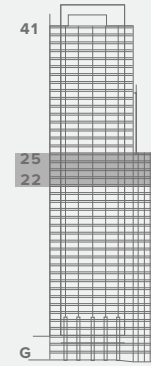
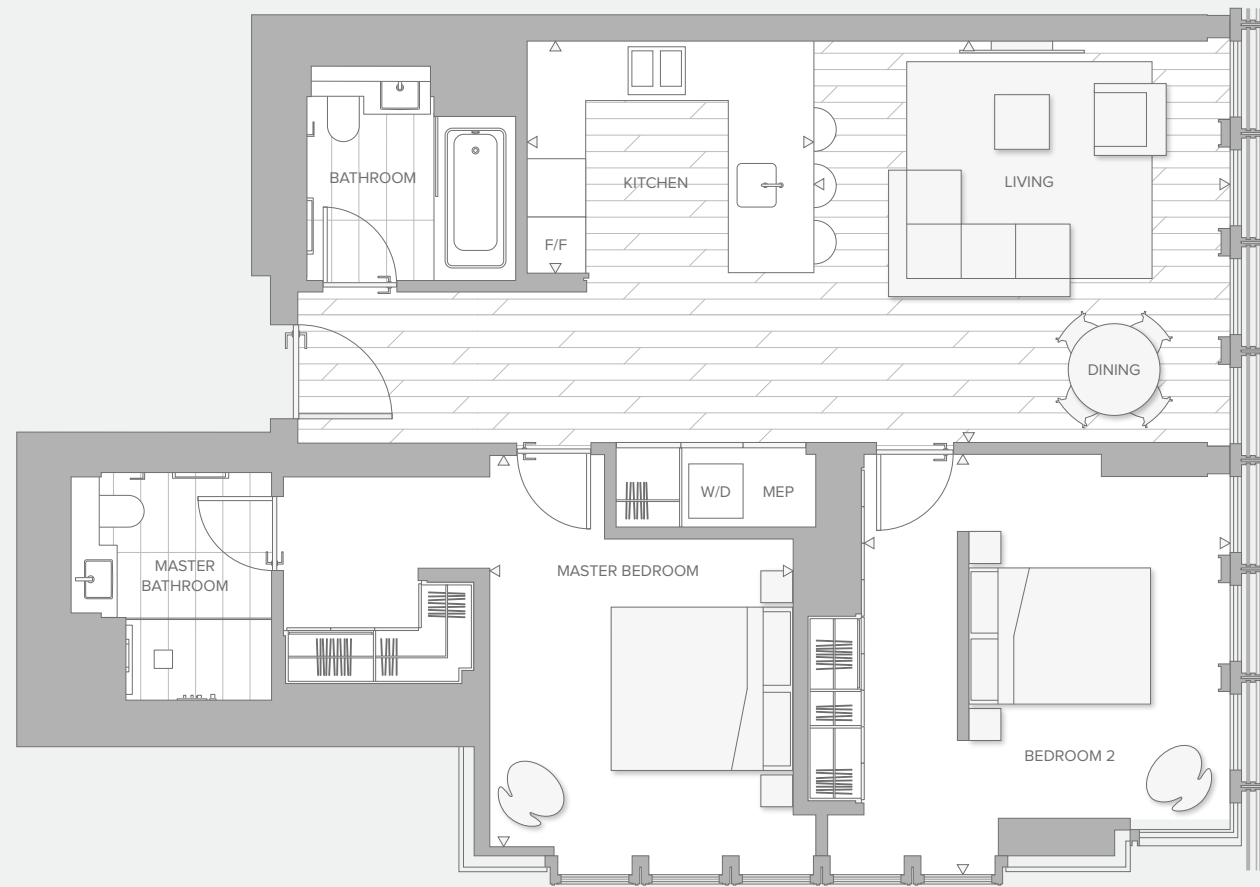
120.6m² / 1,298ft²

Kitchen	4.0 x 2.5m / 13'1" x 8'2"	Master bedroom	3.5 x 3.5m / 11'6" x 11'6"
Living	4.5 x 5.2m / 14'8" x 17'1"	Bedroom 2	3.1 x 2.9m / 10'2" x 9'6"
Dining	3.2 x 4.0m / 10'6" x 13'1"	Study	2.5 x 3.0m / 8'2" x 9'8"

F/F - Fridge Freezer, W/D - Washer Dryer, MEP - Mechanical & Electrical plant

All plans and images contained in this brochure are indicative only and must not be relied upon as being a true or accurate depiction of the relevant scene or area. Specifications, including measurements, dimensions, sizes and distances are approximate only and subject to change at any time without notice. Please note that the units come in different sizes and configurations depending on location within the building.

TWO BEDROOM



TYPE C4

LEVELS 22 – 25

22.09 / 23.09 / 24.09 / 25.09

94.9m² / 1,022ft²

Kitchen 3.2 x 2.6m / 10'4" x 8'7"

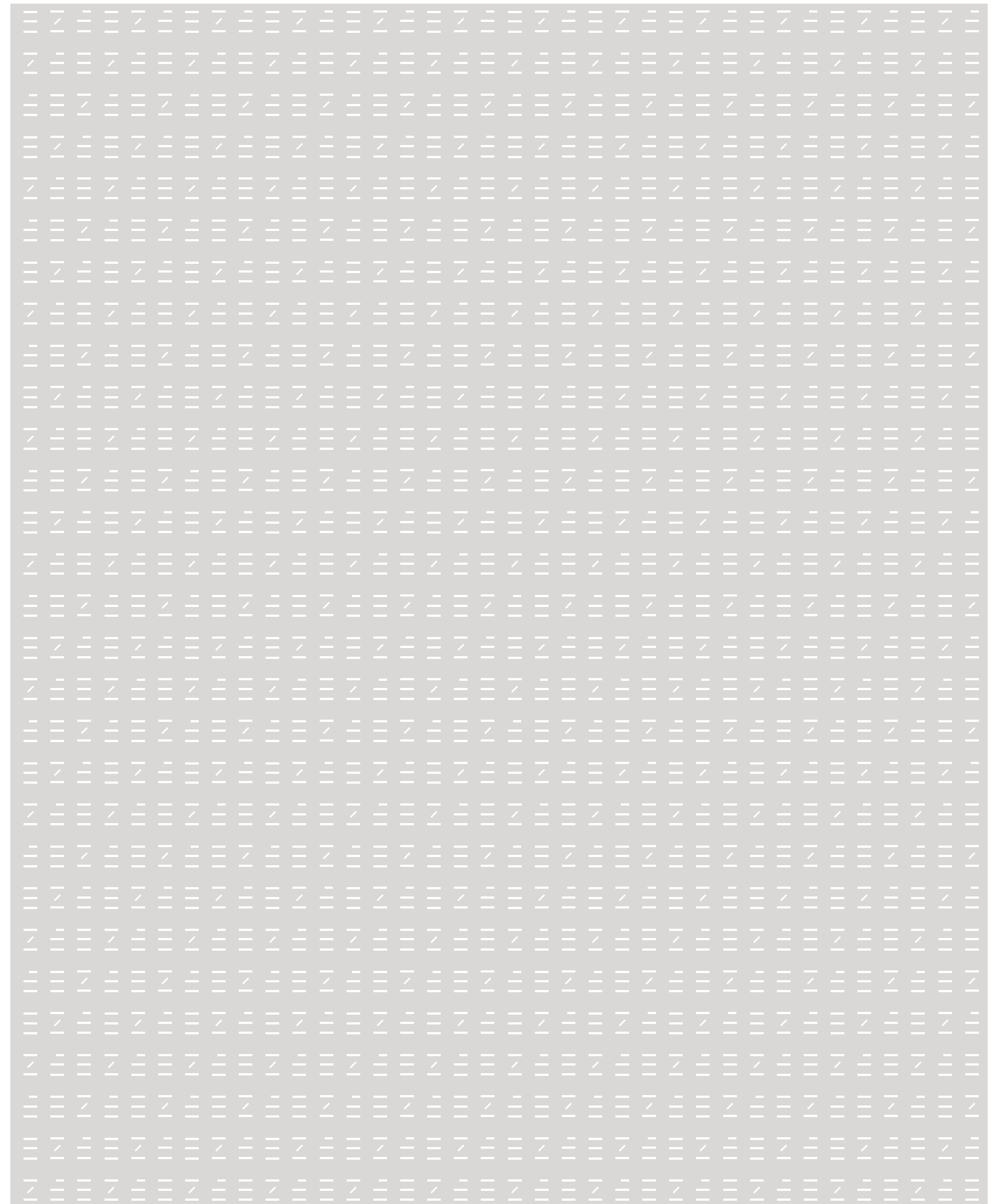
Living/dining 4.6 x 4.4m / 15'1" x 14'6"

Master bedroom 3.3 x 4.3m / 11'0" x 14'2"

Bedroom 2 4.0 x 4.6m / 13'1" x 15'1"

F/F - Fridge Freezer, W/D - Washer Dryer, MEP - Mechanical & Electrical plant

All plans and images contained in this brochure are indicative only and must not be relied upon as being a true or accurate depiction of the relevant scene or area. Specifications, including measurements, dimensions, sizes and distances are approximate only and subject to change at any time without notice. Please note that the units come in different sizes and configurations depending on location within the building.



ONE- AND TWO-BEDROOM SPECIFICATIONS

FLOORING

- Engineered timber flooring to entrance hall, living space and hallways
- Carpet to bedrooms

DOORS

- Full-height solid core timber entrance door with bell
- Solid core painted internal doors
- Square edged, brushed steel ironmongery

DECORATION

- Painted finish to internal walls, ceiling, skirting and door frames
- Feature wood veneer wall panelling in reception rooms (selected apartments)
- Recess for curtains / blinds in reception and bedrooms
- Plasterboard ceilings to all rooms

HEATING AND COOLING

- Combined heating and cooling to kitchen, living / dining area and bedrooms
- Underfloor heating to bathrooms

BEDROOMS

- Fitted wardrobes with timber-lined interiors, drawer pack, hanging rails, shelving and concealed lighting

UTILITY CUPBOARD

- Miele washer / dryer plus coat rail

KITCHEN

- European kitchen with matt lacquer finish doors
- Volakas marble worktops and splashback
- Under-mounted stainless steel sink and brushed steel deck mounted mixer tap
- Linear LED task lighting concealed below kitchen wall units

INTEGRATED APPLIANCES

- Miele fridge freezer
- Miele combination microwave oven (1 bed apartments)
- Miele single oven (2 bed apartments)
- Miele integrated microwave (2 bed apartments)
- Miele induction hob
- Concealed extractor
- Miele dishwasher
- Wine cooler

BATHROOMS

- Volakas marble feature wall and surround
- Ceramic tiles to other walls
- Large format porcelain floor tiles
- Brushed stainless steel fittings
- White inset basin with Volakas marble enclosure, brushed stainless steel mixer tap
- Storage unit over basin with mirrored doors, demister pads and integrated lighting
- Timber vanity unit with drawers in selected bathrooms
- Brushed steel towel rails mounted on heated wall panel
- Brushed steel toilet roll holder

BATHROOMS

- Wall-mounted white ceramic WC with concealed cistern and brushed steel flush plate
- Frameless smoked glass shower enclosure, ceiling mounted shower head and separate hand shower (1-bed apartment and 2-bed en suite)
- White steel bath with marble enclosure, wall mounted mixer taps and separate hand shower (2-bed apartment)
- Volakas marble inset shelving to shower enclosure and bath

LIGHTING

- Energy efficient LED downlighters throughout
- Feature linear cove light above window in reception and master bedroom
- Lutron (or similar) scene setting lighting control system
- Provision for future installation of pendant fittings above breakfast bar, reception, dining areas and bedrooms

POWER, AV, DATA AND TELEPHONE SYSTEMS

- Television, telephone and data points to reception and bedrooms
- High-speed internet connection and connections for television (including Sky Q)
- Provision for future installation of window dressings in reception and bedrooms by purchaser

LIFTS

- Residents' lifts from ground to Level 20 and all levels above
- Direct access to gymnasium, swimming pool and lobby via residents' lift

SECURITY

- 24-hour concierge on Level 20
- Management and 24-hour security services provided from on site management office
- CCTV surveillance

AMENITIES

- Heated indoor swimming pool, gymnasium, sauna, steam room and male / female changing rooms on Level 3
- Residents' concierge, meeting rooms, and sky bar on Level 20
- Residents' club room on Level 33
- Residents' sky terrace on Level 34

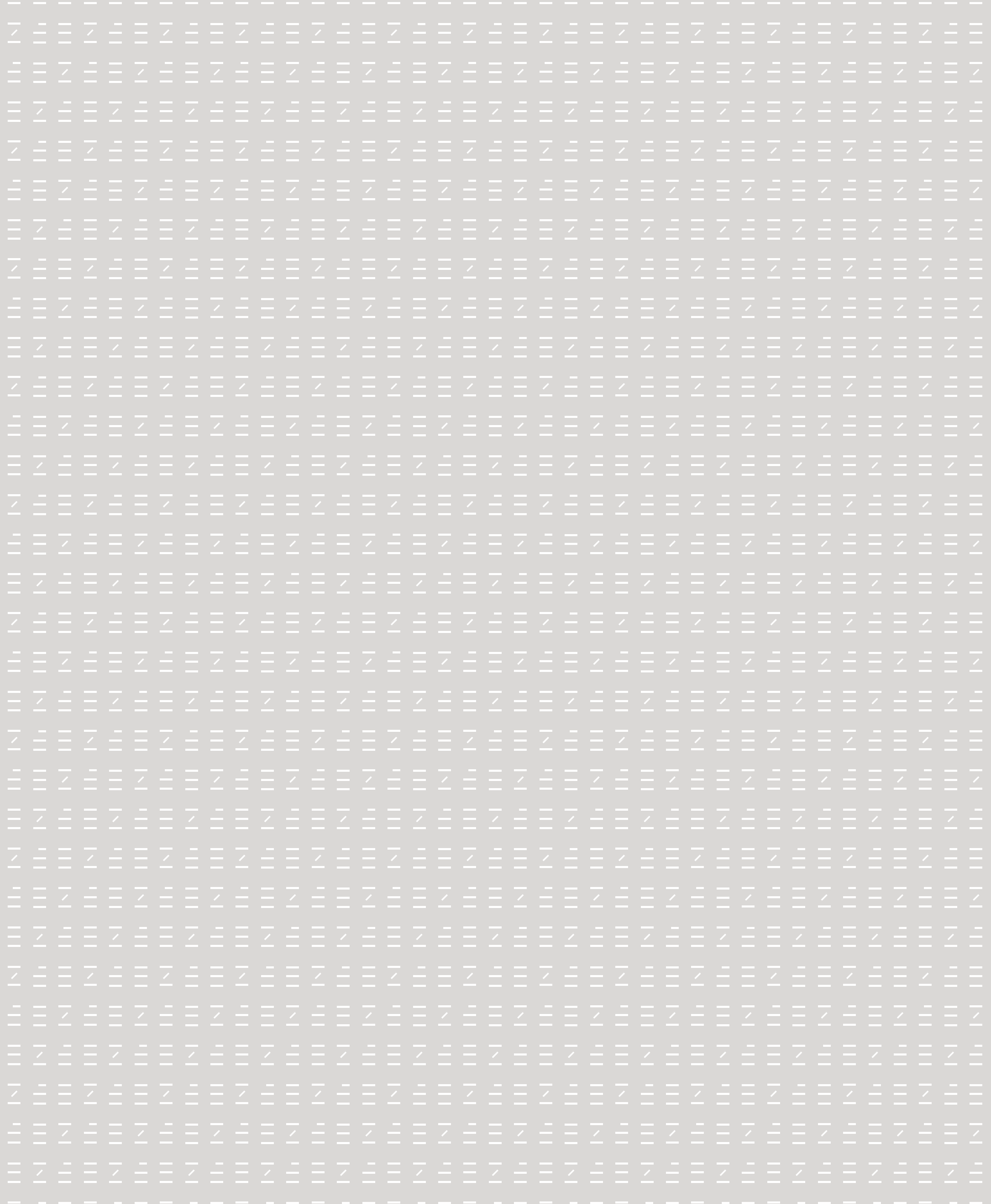
HOTEL AMENITIES*

- Use of hotel business centre, bars, restaurant, private dining and ballroom (*available at additional cost)

STORAGE

- Secure cycle storage
- Storage units (available at extra cost and subject to availability)





THREE- BEDROOM APARTMENTS

An exclusive collection of three-bedroom apartments are arranged across the top Levels of the building – a prime location that ensures soaring views and a sense of total privacy.

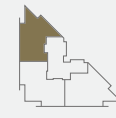
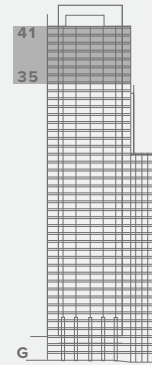
The collection benefits from dual or triple aspects which afford panoramic views of the City and beyond. Generous reception rooms offer impressive spaces, well suited to entertaining.

Master suites with dressing areas and four-piece bathrooms recreate a hotel experience within your own home. Whilst second bedrooms are ideal for guests, being of generous proportions and featuring en suite bathrooms.



Selected two- and three-bedroom apartment dining area

THREE BEDROOM



TYPE D1

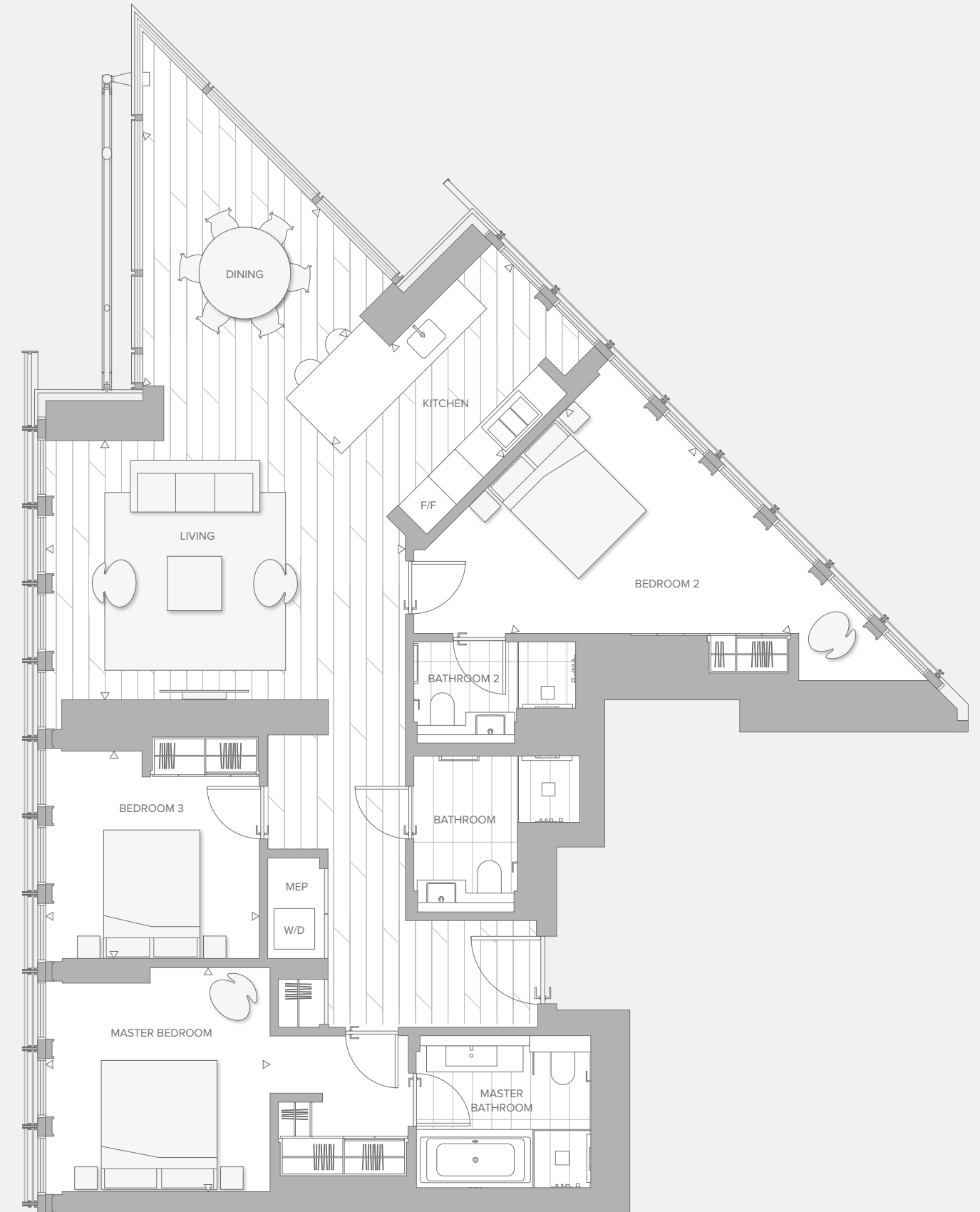
LEVELS 35 – 41

35.01 / 36.01 / 37.01 / 38.01 / 39.01 / 40.01 / 41.01

136.1m² / 1,465ft²

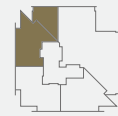
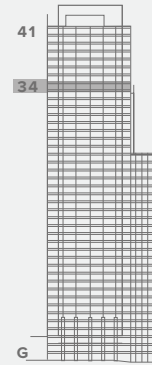
Kitchen	4.00 x 2.5m / 13'1" x 8'2"	Master bedroom	3.5 x 3.5m / 11'6" x 11'6"
Living	5.6 x 4.0m / 18'4" x 13'1"	Bedroom 2	4.0 x 4.9m / 13'2" x 16'0"
Dining	3.9 x 4.4m / 12'9" x 14'6"	Bedroom 3	3.3 x 3.2m / 10'10" x 10'7"

F/F - Fridge Freezer, W/D - Washer Dryer, MEP - Mechanical & Electrical plant



All plans and images contained in this brochure are indicative only and must not be relied upon as being a true or accurate depiction of the relevant scene or area. Specifications, including measurements, dimensions, sizes and distances are approximate only and subject to change at any time without notice. Please note that the units come in different sizes and configurations depending on location within the building.

THREE BEDROOM



TYPE D1 WITH SKY TERRACE

LEVEL 34

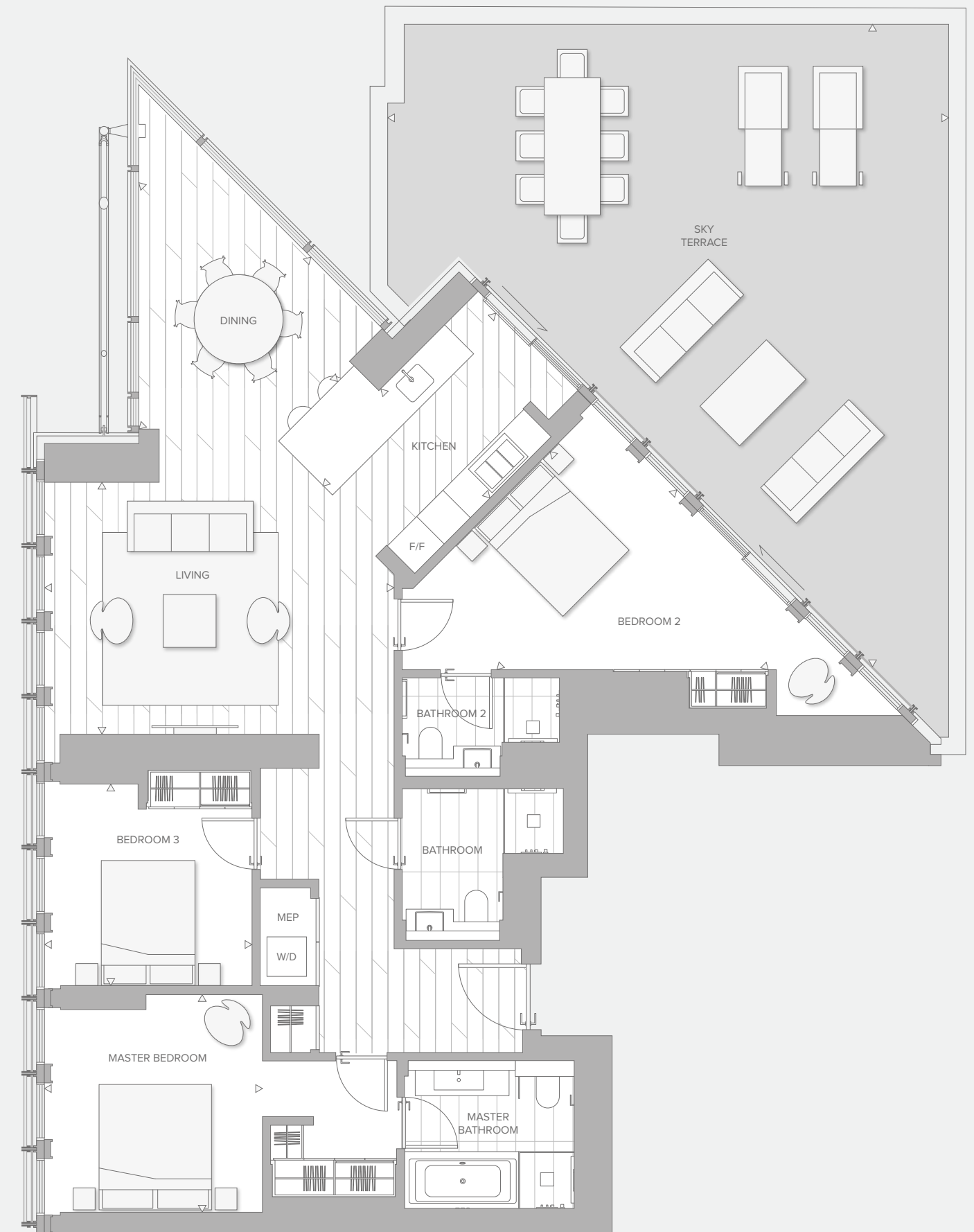
34.01

136.1m² / 1,465ft²

Sky Terrace 64.1m² / 690ft²

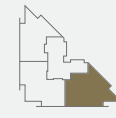
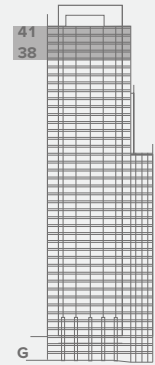
Kitchen	4.00 x 2.5m / 13'1" x 8'2"	Master bedroom	3.5 x 3.5m / 11'6" x 11'6"
Living	5.6 x 4.0m / 18'4" x 13'1"	Bedroom 2	4.0 x 4.9m / 13'2" x 16'0"
Dining	3.9 x 4.4m / 12'9" x 14'6"	Bedroom 3	3.3 x 3.2m / 10'10" x 10'7"

F/F - Fridge Freezer, W/D - Washer Dryer, MEP - Mechanical & Electrical plant



All plans and images contained in this brochure are indicative only and must not be relied upon as being a true or accurate depiction of the relevant scene or area. Specifications, including measurements, dimensions, sizes and distances are approximate only and subject to change at any time without notice. Please note that the units come in different sizes and configurations depending on location within the building.

THREE BEDROOM WITH STUDY



TYPE D2

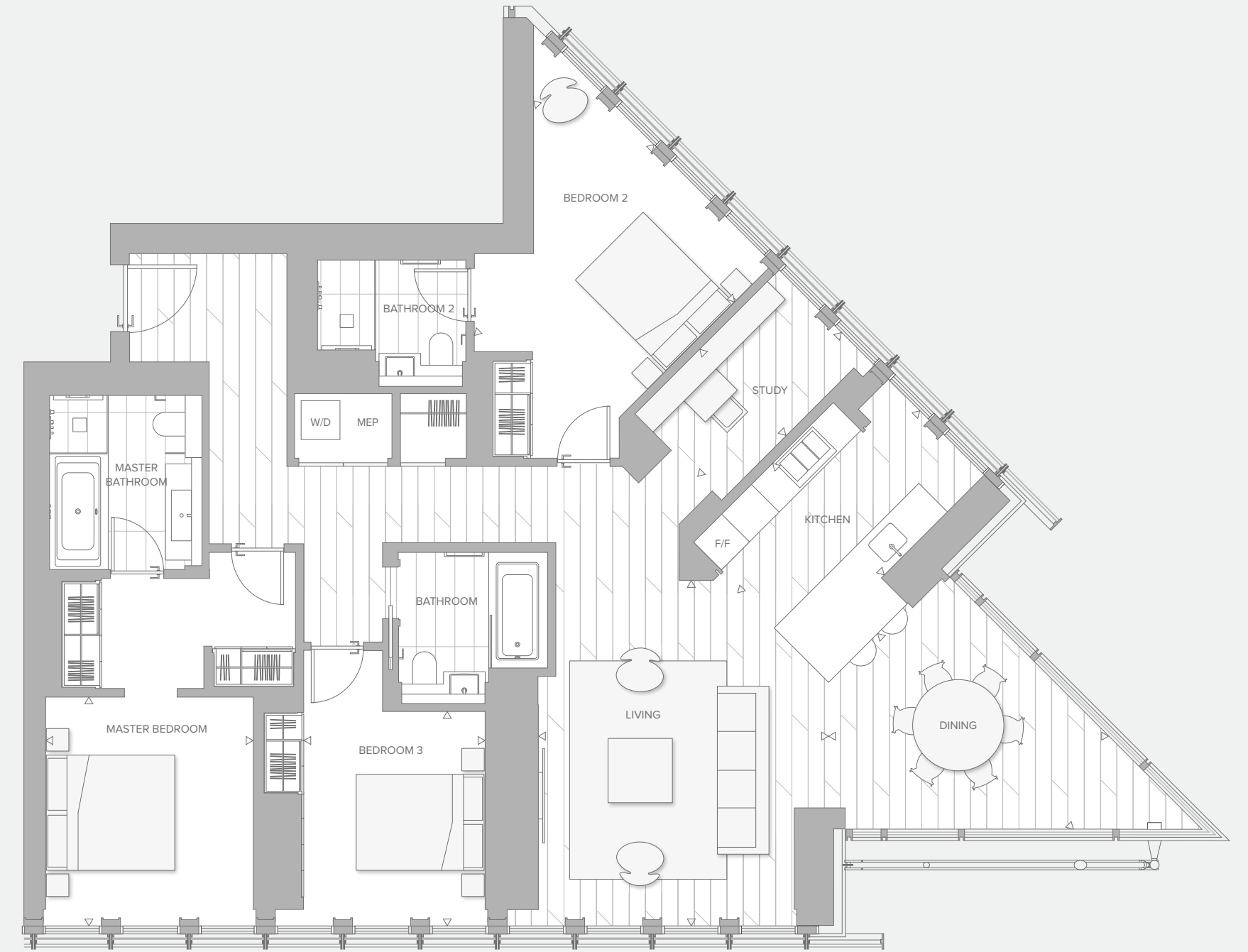
LEVELS 38 – 41

38.03 / 39.03 / 40.03 / 41.03

152.3m² / 1,639ft²

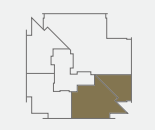
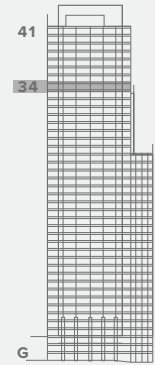
Kitchen	4.0 x 2.5m / 13'1" x 8'2"	Bedroom 2	4.1 x 4.4m / 13'7" x 14'6"
Living	4.5 x 5.4m / 14'8" x 17'7"	Study	3.2 x 1.9m / 10'5" x 6'2"
Dining	4.0 x 4.1m / 13'1" x 13'5"	Bedroom 3	2.8 x 3.3m / 9'2" x 10'11"
Master bedroom	3.6 x 3.2m / 11'8" x 10'6"		

F/F - Fridge Freezer, W/D - Washer Dryer, MEP - Mechanical & Electrical plant



All plans and images contained in this brochure are indicative only and must not be relied upon as being a true or accurate depiction of the relevant scene or area. Specifications, including measurements, dimensions, sizes and distances are approximate only and subject to change at any time without notice. Please note that the units come in different sizes and configurations depending on location within the building.

THREE BEDROOM WITH STUDY



TYPE D2 WITH SKY TERRACE

LEVEL 34

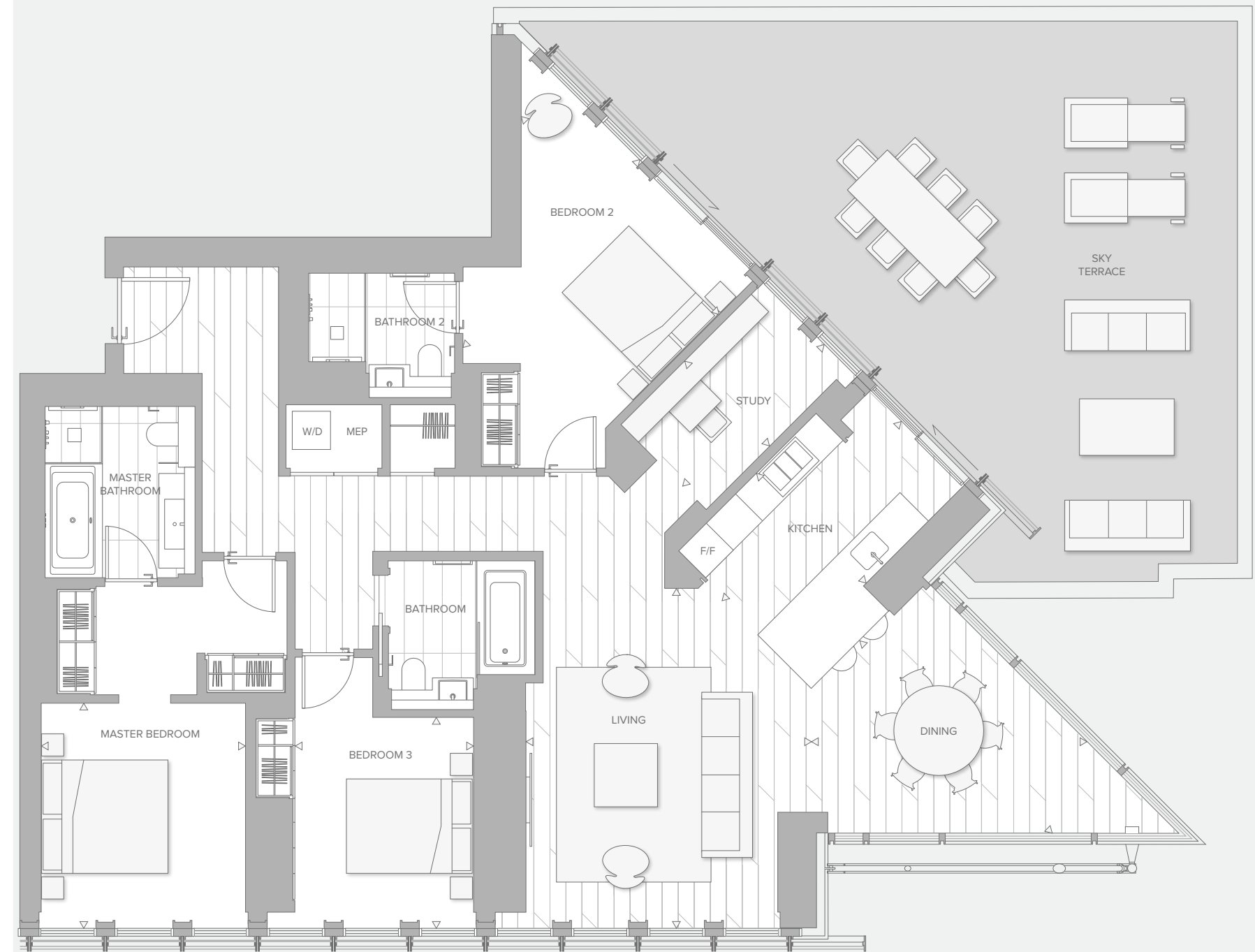
34.03

152.3m² / 1,639ft²

Sky Terrace 64.1m² / 690ft²

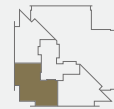
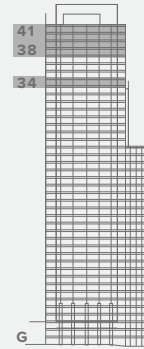
Kitchen	4.0 x 2.5m / 13'1" x 8'2"	Bedroom 2	4.1 x 4.4m / 13'7" x 14'6"
Living	4.5 x 5.4m / 14'8" x 17'7"	Study	3.2 x 1.9m / 10'5" x 6'2"
Dining	4.0 x 4.1m / 13'1" x 13'5"	Bedroom 3	2.8 x 3.3m / 9'2" x 10'11"
Master bedroom	3.6 x 3.2m / 11'8" x 10'6"		

F/F - Fridge Freezer, W/D - Washer Dryer, MEP - Mechanical & Electrical plant



All plans and images contained in this brochure are indicative only and must not be relied upon as being a true or accurate depiction of the relevant scene or area. Specifications, including measurements, dimensions, sizes and distances are approximate only and subject to change at any time without notice. Please note that the units come in different sizes and configurations depending on location within the building.

THREE BEDROOM



TYPE D3

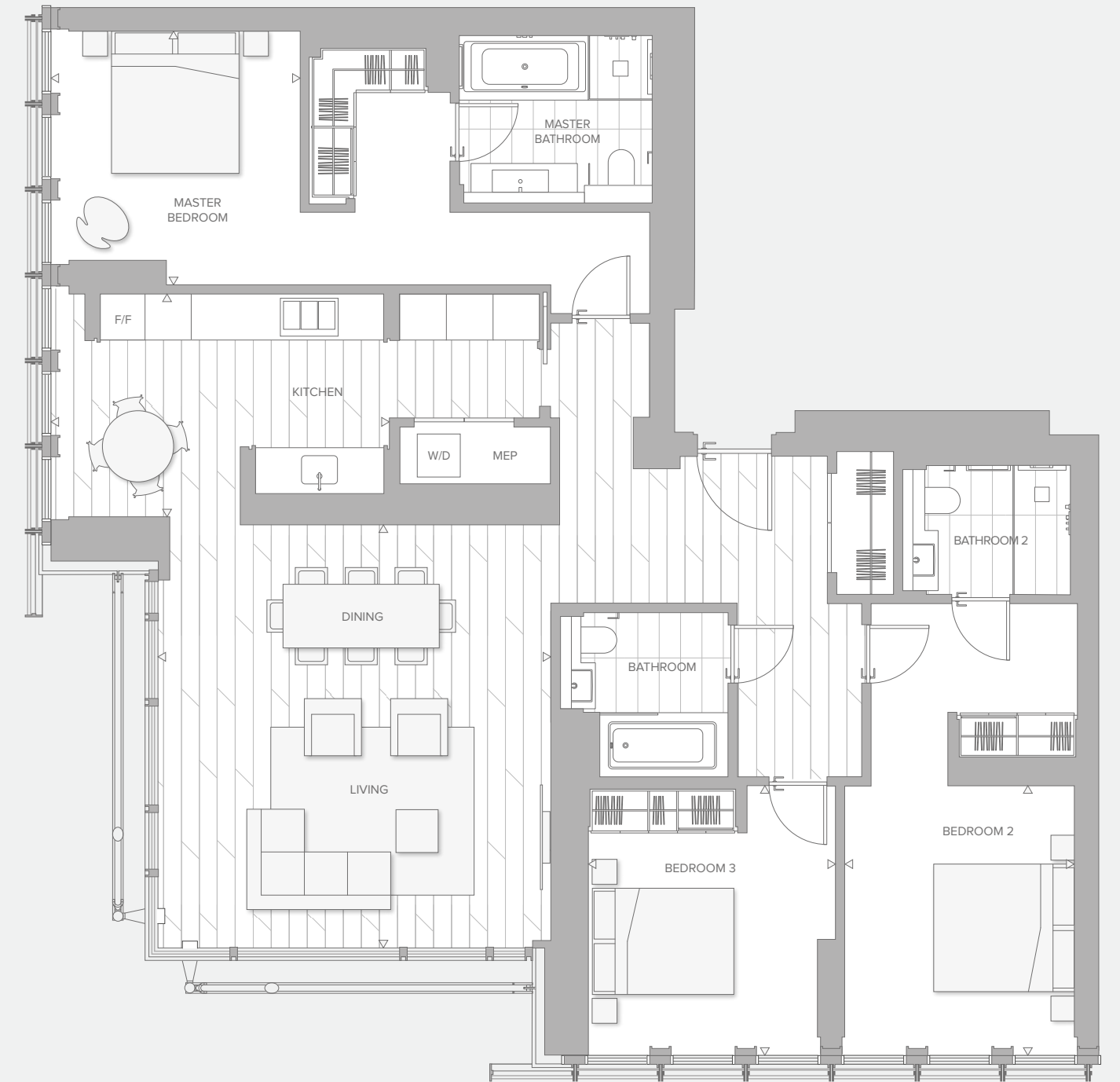
LEVELS 34, 38 – 41

34.02 / 38.02 / 39.02 / 40.02 / 41.02

154.6m² / 1,664ft²

Kitchen	4.8 x 3.2m / 15'9" x 10'6"	Bedroom 2	3.2 x 3.8m / 10'7" x 12'5"
Living/dining	5.5 x 5.9m / 18'1" x 19'4"	Bedroom 3	3.6 x 3.5m / 11'9" x 11'5"
Master bedroom	3.5 x 3.8m / 11'5" x 12'5"		

F/F - Fridge Freezer, W/D - Washer Dryer, MEP - Mechanical & Electrical plant



All plans and images contained in this brochure are indicative only and must not be relied upon as being a true or accurate depiction of the relevant scene or area. Specifications, including measurements, dimensions, sizes and distances are approximate only and subject to change at any time without notice. Please note that the units come in different sizes and configurations depending on location within the building.

THREE-BEDROOM SPECIFICATIONS

FLOORING

- Engineered timber flooring to entrance hall, living space and hallways
- Carpet to bedrooms

DOORS

- Full-height solid core timber entrance door with bell
- Solid core painted internal doors
- Square edged, brushed steel ironmongery

DECORATION

- Painted finish to internal walls, ceiling, skirting and door frames
- Feature wood veneer wall panelling in reception rooms (selected apartments)
- Recess for curtains / blinds in reception and bedrooms
- Plasterboard ceilings to all rooms

HEATING AND COOLING

- Combined heating and cooling to kitchen, living / dining area and bedrooms
- Underfloor heating to bathrooms

BEDROOMS

- Fitted wardrobes with timber-lined interiors, hanging rails, shelving, lighting and drawer pack (master and bedroom 2)
- Fitted wardrobes with timber-lined interiors, hanging rails, shelving and concealed lighting (bedroom 3)

UTILITY CUPBOARD

- Miele washer / dryer plus coat rail

KITCHEN

- European kitchen with matt lacquer finish doors
- Pietra Santa marble worktop and splashback
- Under-mounted stainless steel sink and brushed steel deck-mounted mixer with boiling water function
- LED lighting integrated to underside of wall units
- Linear LED task lighting concealed below kitchen wall units

INTEGRATED APPLIANCES

- Miele full-height fridge freezer
- Miele combination microwave oven
- Miele single oven
- Miele 6 ring induction hob
- Concealed extractor
- Miele dishwasher
- Wine cooler

BATHROOMS

- Volakas marble feature wall and surround
- Ceramic tiles to other walls
- Large format porcelain floor tiles
- Brushed stainless steel fittings
- White inset basin with Volakas marble enclosure, brushed stainless steel mixer tap
- Storage unit over basin with mirrored doors, demister pads and integrated lighting
- Timber vanity unit with drawers (to master bathroom)
- Brushed steel towel rails mounted on heated wall panel
- Wall-mounted white ceramic WC with concealed cistern, brushed steel flush plate

- 4-piece master bathroom features frameless smoked glass shower enclosure, ceiling mounted shower head and separate hand shower. Plus, white steel bath with marble enclosure, wall mounted mixer taps and separate hand shower
- Second bathroom has frameless smoked glass shower enclosure, ceiling mounted shower head and separate hand shower
- Third bathroom has white steel bath with marble enclosure, wall mounted mixer taps and separate hand shower
- Volakas marble inset shelving to shower enclosure and bath

LIGHTING

- Energy efficient LED downlighters throughout
- Feature linear cove light above window in reception and master bedroom
- Lutron (or similar) scene setting lighting control system
- 5 amp lighting in reception rooms and bedrooms
- Provision for future installation of pendant fittings above breakfast bar, reception, dining areas and bedrooms

POWER, AV, DATA AND TELEPHONE SYSTEMS

- Television, telephone and data points to reception and bedrooms
- High-speed internet connection and connections for television (including Sky Q)
- Motorised window dressings to reception and bedrooms

LIFTS

- Residents' passenger lifts from ground to Level 20 and all residence levels above
- Direct access to gymnasium, swimming pool and lobby via residents' lift

SECURITY

- 24-hour concierge on Level 20
- Management and 24-hour security services provided from on site management office
- CCTV surveillance

AMENITIES

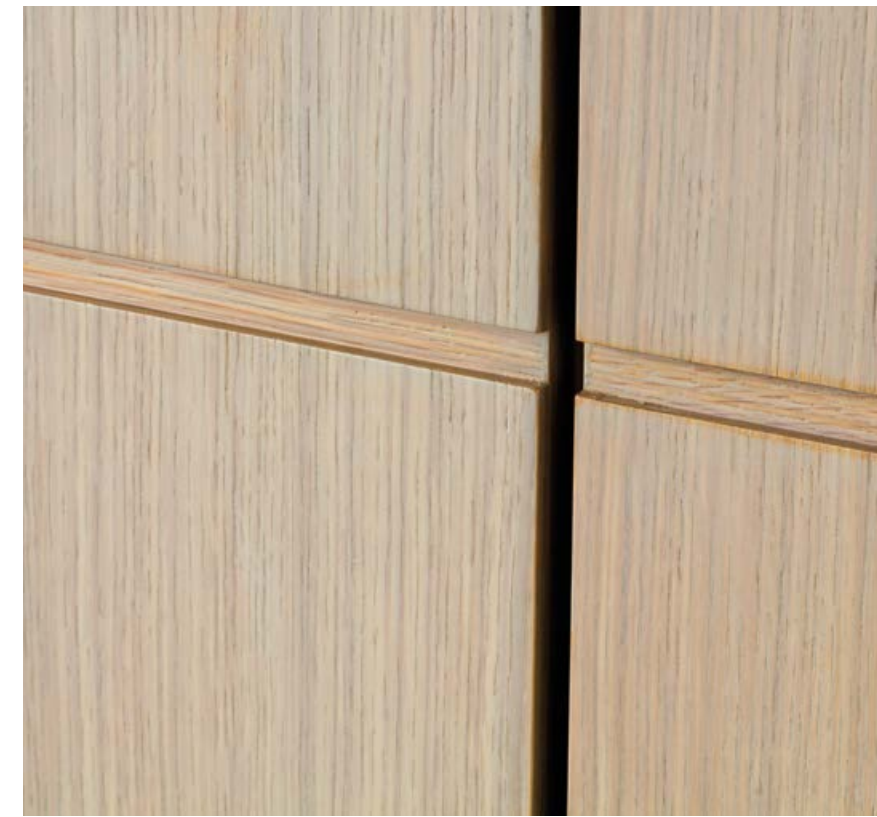
- Heated indoor swimming pool, gymnasium, sauna, steam room and male / female changing rooms on Level 3
- Residents' concierge, meeting rooms and sky bar on Level 20
- Residents' club room on Level 33
- Residents' sky terrace on Level 34

HOTEL AMENITIES*

- Use of hotel business centre, bars, restaurant, private dining and ballroom (*available at additional cost)

STORAGE

- Secure cycle storage
- Storage units available at extra cost and subject to availability





Panoramic views of the City and Tower Bridge

ONE BISHOPSGATE PLAZA

SALES AND MARKETING SUITE
+44 (0)20 3515 0900

www.onebgp.com

All computer-generated images (CGIs) and photography are indicative only.

Additional and à la carte services listed within these brochures may come at an additional cost and require pre-booking through the concierge. All services may be varied at any time.

UOL Group Limited for itself and its subsidiaries, its officers and employees (collectively, 'UOL') and its appointed agents exclude liability for all losses arising out of, or in connection with, these particulars to the maximum extent permitted by law and hereby give notice that:

1. These particulars have been prepared in good faith and with all due care and are believed to be correct at the time of publication. However, they were prepared from preliminary plans and specifications before the completion of the properties and are intended only as a guide for the marketing of One Bishopsgate Plaza. As such, prospective purchasers should not rely on this information and should ensure that their solicitor and professional advisors check the plans and specification attached to their contract.
2. These particulars do not constitute the whole or any part of any offer or contract and must not be relied upon as statements or representations of fact; all statements, representations, warranties, undertakings or promises, whether express or implied, are excluded to the maximum extent permitted by law.
3. All plans and images contained in this brochure are indicative only and must not be relied upon as a true or accurate depiction of the relevant scene or area. Specifications, including measurements, dimensions, sizes and distances are approximate only and subject to change at any time without notice.
4. The accuracy of any descriptions, including references to condition, in these particulars are not guaranteed; prospective purchasers must satisfy themselves as to their accuracy.
5. Branded products, goods or services referred to within these particulars are not guaranteed; alternatives of a comparable quality may be provided.
6. It should not be assumed that the property has all the necessary planning, building regulation or other consents and neither UOL nor its appointed agents have tested any services, equipment or facilities. Purchasers must satisfy themselves by inspection or otherwise.